

FSC-certified forest management benefits large mammals compared to non-FSC

<https://doi.org/10.1038/s41586-024-07257-8>

Received: 22 October 2022

Accepted: 29 February 2024

Published online: 10 April 2024

Open access

 Check for updates

Joeri A. Zwerts^{1,2✉}, E. H. M. Sterck^{2,3}, Pita A. Verweij⁴, Fiona Maisels^{5,6}, Jaap van der Waarde⁷, Emma A. M. Geelen², Georges Belmont Tchoumba⁷, Hermann Frankie Donfouet Zebaze⁷ & Marijke van Kuijk¹

More than a quarter of the world's tropical forests are exploited for timber¹. Logging impacts biodiversity in these ecosystems, primarily through the creation of forest roads that facilitate hunting for wildlife over extensive areas. Forest management certification schemes such as the Forest Stewardship Council (FSC) are expected to mitigate impacts on biodiversity, but so far very little is known about the effectiveness of FSC certification because of research design challenges, predominantly limited sample sizes^{2,3}. Here we provide this evidence by using 1.3 million camera-trap photos of 55 mammal species in 14 logging concessions in western equatorial Africa. We observed higher mammal encounter rates in FSC-certified than in non-FSC logging concessions. The effect was most pronounced for species weighing more than 10 kg and for species of high conservation priority such as the critically endangered forest elephant and western lowland gorilla. Across the whole mammal community, non-FSC concessions contained proportionally more rodents and other small species than did FSC-certified concessions. The first priority for species protection should be to maintain unlogged forests with effective law enforcement, but for logged forests our findings provide convincing data that FSC-certified forest management is less damaging to the mammal community than is non-FSC forest management. This study provides strong evidence that FSC-certified forest management or equivalently stringent requirements and controlling mechanisms should become the norm for timber extraction to avoid half-empty forests dominated by rodents and other small species.

Commercial logging concessions cover more than one-quarter of the world's remaining tropical forests¹. Forest certification schemes aim to have more positive socio-economic and environmental outcomes compared to conventional logging schemes. For example, the Forest Stewardship Council (FSC) aims to reduce direct environmental impacts by various means that include maintaining high conservation value forests and applying reduced impact logging practices (Supplementary Tables 1 and 2). A major concern for biodiversity is that timber extraction—by the creation of roads—opens previously remote forests, enabling illegal and unsustainable hunting^{4–7}. This indirect effect of logging is known to mainly influence medium- to large-sized forest mammals, which are particularly vulnerable to human pressure⁸. FSC certification may alleviate these pressures because, among other measures, companies reduce accessibility to concessions by closing off old logging roads, prohibit wild meat transport and hunting materials, provide access to alternative meat sources for workers and their families, and carry out surveillance by rangers. An FSC certificate is valid for 5 years and logging companies are audited for compliance through third-party annual surveillance assessments.

In African tropical forests, FSC certification has been shown to be associated with reduced deforestation⁹, improved working and living

conditions of employees and benefit-sharing with neighbouring institutions¹⁰. Studies in Latin America suggest that mammal occupancy in FSC-certified sites is comparable to that of protected areas^{11,12}. There is, however, little data on the status of faunal communities in FSC-certified versus non-FSC forests^{2,3}. Most studies on the effectiveness of FSC certification for wildlife conservation have focused on one or a few sites or species at a time^{13–16}. Although these studies reported a positive impact of FSC certification on wildlife compared to non-FSC concessions, their research designs did not account for explanatory variables such as concession location, land-use history or stochastic effects^{17,18}. One study included several sites and species and found no effect of FSC certification¹⁹. However, that study investigated only bird species richness: bird dispersal distances are much higher than those of terrestrial mammals and may thus be a weak indicator of local management. In addition to simply comparing species diversity, it is important to compare population sizes between forest management types. Hunting does not necessarily completely extirpate wildlife species, especially when forests are connected, but rather results in population declines⁴.

We used camera traps to assess whether FSC certification can mitigate the negative effects of timber extraction on wildlife by studying the encounter rate of a broad range of mammal species across several

¹Ecology and Biodiversity, Utrecht University, Utrecht, The Netherlands. ²Animal Behaviour & Cognition, Utrecht University, Utrecht, The Netherlands. ³Animal Science Department, Biomedical Primate Research Centre, Rijswijk, The Netherlands. ⁴Copernicus Institute of Sustainable Development, Utrecht University, Utrecht, The Netherlands. ⁵Faculty of Natural Sciences, University of Stirling, Stirling, UK. ⁶Wildlife Conservation Society, Global Conservation Program, New York, NY, USA. ⁷WWF Cameroon, Yaoundé, Cameroon. ✉e-mail: j.a.zwerts@uu.nl

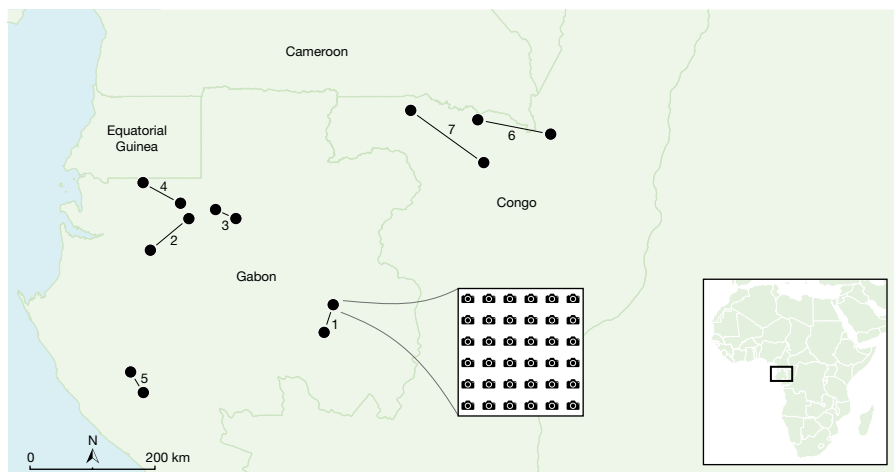


Fig. 1 | Locations of the 14 paired logging concessions in Gabon and the Republic of Congo. Between 28 to 36 cameras were deployed in each concession in systematic, 1 km spaced grids. Numbers and lines indicate the pairs of FSC-certified and non-FSC concessions.

sites. We compared small- to large-sized mammal observations across seven paired FSC-certified and non-FSC concessions in Gabon and the Republic of Congo (Fig. 1). Gabon and the Republic of Congo lie in western equatorial Africa (WEA). We included all companies that were FSC-certified between 2018 and 2021 in this region, except for one which refused to allow access. WEA is particularly suitable for these analyses, as its forests are reasonably intact and logging concessions are embedded in a matrix of contiguous forest, which are therefore mostly devoid of influences other than the effects of logging and hunting²⁰. Wild meat hunting is pervasive throughout WEA, whereby logging increases hunting pressure by increasing access (logging roads) and through the arrival of people working in the concessions in once-remote forests⁸. By ensuring spatial pairing of the FSC-certified and non-FSC concessions we minimized the influence of regional landscape heterogeneity. We calculated mammal encounter rates and grouped mammal species into five body mass classes. The relative encounter rate of these classes could be used as a proxy for hunting pressure, as larger-bodied species are targeted more by hunters⁸. In addition, larger-bodied species recover more slowly from hunting compared to smaller-bodied species, resulting in lower abundances of large versus small species under higher hunting pressure^{21,22}. Finally, we explored how FSC-certified forest management affects mammal encounter rate by taxonomic group and by IUCN Red List categories. We hypothesized that FSC certification would effectively decrease hunting pressure and therefore predicted a higher encounter rate of larger-bodied species in FSC-certified compared with non-FSC logging concessions.

We collected and catalogued nearly 1.3 million photos from 474 camera-trap locations for a total of 35,546 days, averaging 2,539 camera-trap days per concession (Extended Data Table 1). We detected a total of 55 mammal species (Extended Data Table 2). The mammal encounter rate estimated by our model (Fig. 2a) was 1.5 times higher in FSC-certified concessions compared to non-FSC concessions (Extended Data Table 3). We also found fewer signs of hunting (Fig. 2b) in FSC-certified than in non-FSC concessions. Estimated total faunal biomass derived from mammal encounter rates was 4.5 times higher in FSC-certified compared to non-FSC concessions (Extended Data Fig. 1). Larger species contributed more to the total biomass. We observed comparable species diversity in the two concession types, as only a few species, all with very low encounter rates, were lacking completely in one or other of the concession types (Extended Data Table 2).

The differences between mammal encounter rates in FSC-certified and non-FSC concessions increased with body mass (Fig. 3 and Extended Data Tables 3 and 4). FSC-certified concessions had higher encounter

rates of mammals above 10 kg than non-FSC concessions but there was no difference for mammals below 10 kg. Model estimates showed that mammals in body mass classes over 100, 30–100 and 10–30 kg, had encounter rates that were 2.7, 2.5 and 3.5 times higher, respectively, in FSC-certified concessions compared to non-FSC concessions. Mammal encounter rates of the IUCN Red List categories critically endangered, near threatened and least concern were 2.7, 2.3 and 1.4 times higher, respectively, in FSC-certified compared to non-FSC concessions (Fig. 4 and Extended Data Tables 3 and 4).

Mammal encounter rate in FSC-certified and non-FSC concessions varied between taxonomic groups (Fig. 5 and Extended Data Tables 3 and 4). In FSC-certified concessions, forest elephants were encountered 2.5 times, primates 1.8 times, even-toed ungulates 2 times and

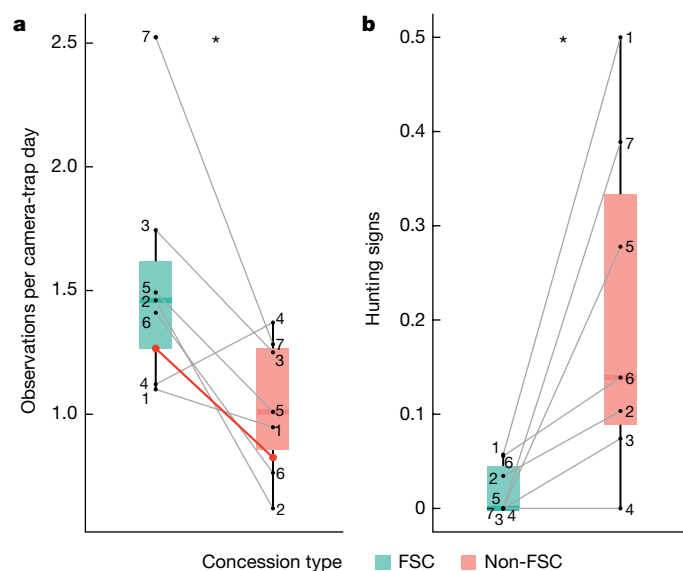


Fig. 2 | Mammal encounter rate and hunting signs in FSC-certified and non-FSC concessions. **a, b**, Encounter rate of all observed mammals ($P = 0.041$) (**a**) and proportion of camera locations with hunting signs ($P = 0.036$) (**b**). Numbers represent paired FSC-certified ($n = 7$) and non-FSC ($n = 7$) concessions. The red line in **a** represents the linear mixed model predicted fixed effect (certification status) and grey lines represent random effects (concession pairs). Differences between hunting signs in **b** were analysed using a two-sided Wilcoxon signed-rank test. Data are represented as boxplots, where central lines represent medians and lower and upper lines correspond to the first and third quartiles, whiskers reflect 1.5 times the interquartile range. * $P < 0.05$.

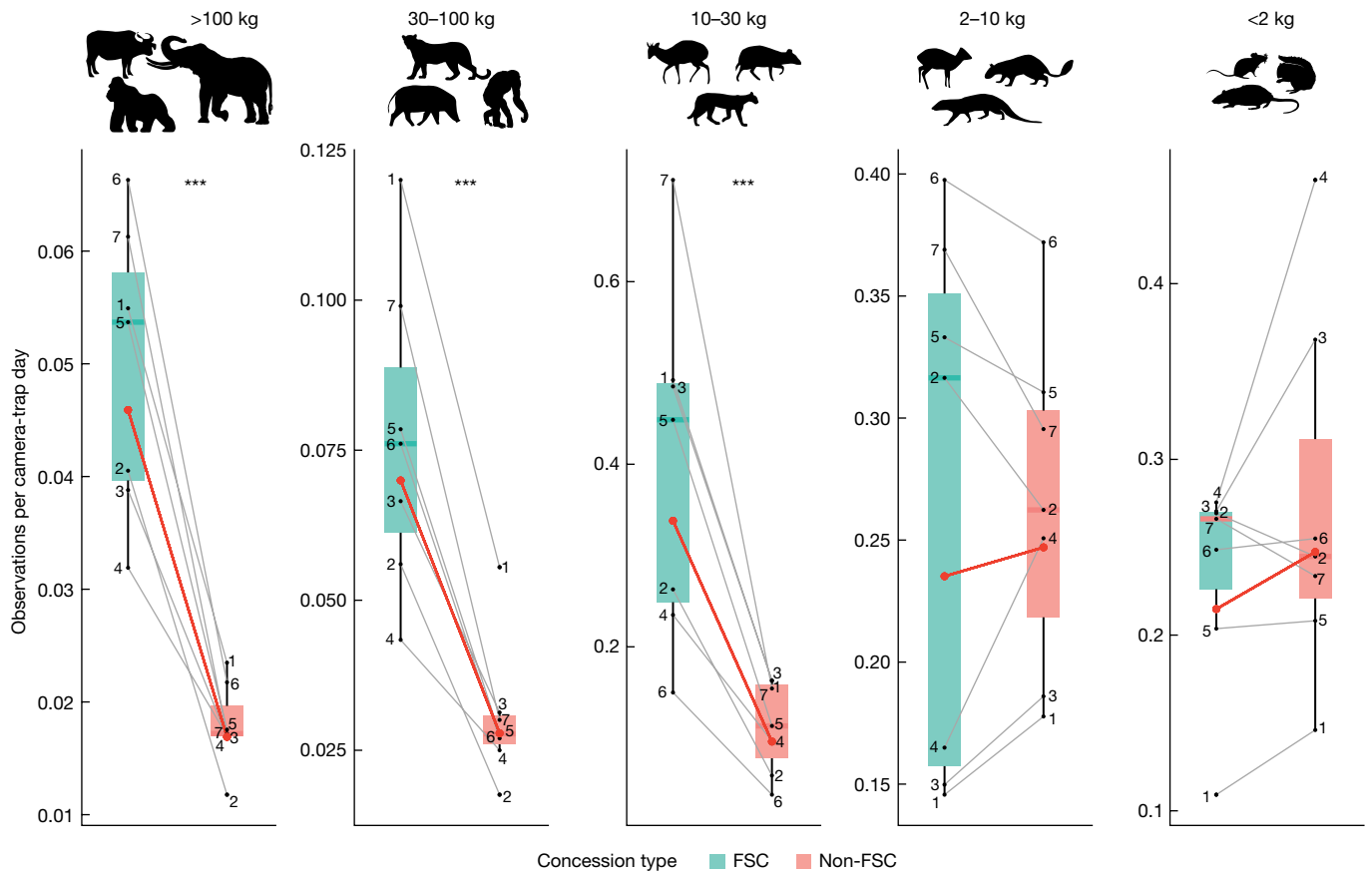


Fig. 3 | Mammal encounter rate across five body mass classes in paired FSC-certified and non-FSC concessions. Numbers represent paired FSC-certified ($n = 7$) and non-FSC ($n = 7$) concessions, red lines represent linear mixed model predicted fixed effects (certification status) and grey lines represent random effects (concession pairs). Data are represented as boxplots, where central lines represent medians and lower and upper lines correspond to

the first and third quartiles, whiskers reflect 1.5 times the interquartile range. Pairwise comparisons were multivariate t adjusted. *** $P < 0.001$. Exact P values are summarized in Extended Data Table 3. Note that the scales of the y axes vary. Silhouettes of *Gorilla gorilla*, *Syncerus caffer*, *Potamochoerus porcus*, *Cephalophus* sp., *Hyemoschus aquaticus*, *Philantomba monticola*, *Atherurus africanus* and mice were created by T. Markus.

carnivores 1.5 times more compared to non-FSC concessions. The encounter rate of pangolins and rodents did not differ.

several logging concessions and for a broad range of mammals. Our data provide strong evidence that FSC-certified forest management results in higher overall mammal abundance, as approximated by encounter rate and faunal biomass relative to non-FSC forest management. This effect was most pronounced for species larger than 10 kg, which was consistent for all FSC–non-FSC concession pairs, probably because these medium to large species recover more slowly from population losses and may be targeted more often by hunters^{21,22}.

Discussion

The loss of large mammals

We conducted a large-scale quantitative study to assess the impact of FSC-certified forest management on mammal encounter rate across

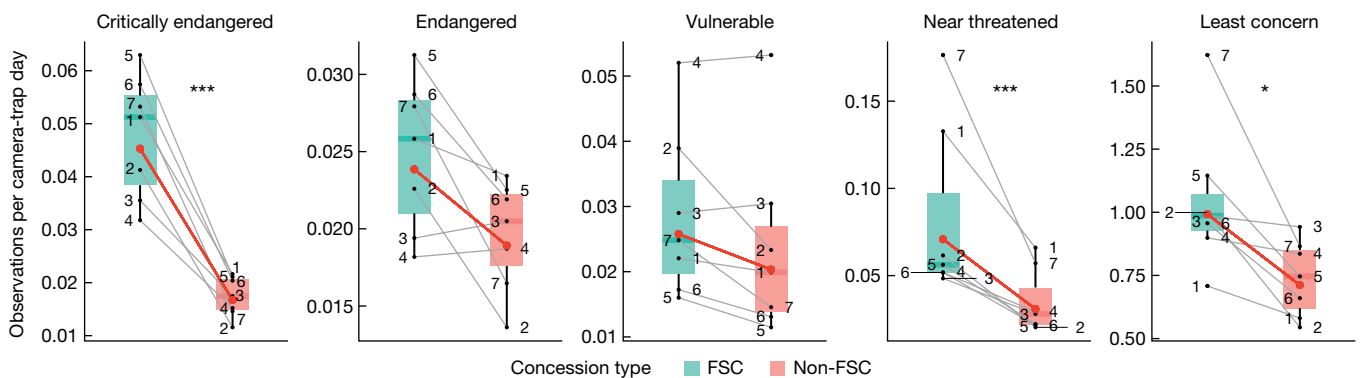


Fig. 4 | Mammal encounter rate across IUCN Red List categories in paired FSC-certified and non-FSC concessions. Numbers represent paired FSC-certified ($n = 7$) and non-FSC ($n = 7$) concessions, red lines represent linear mixed model predicted fixed effects (certification status) and grey lines represent random effects (concession pairs),

where central lines represent medians and lower and upper lines correspond to the first and third quartiles, whiskers reflect 1.5 times the interquartile range. Pairwise comparisons were multivariate t adjusted. *** $P < 0.001$, * $P < 0.05$. Exact P values are summarized in Extended Data Table 3. Note that the scales of the y axes vary.

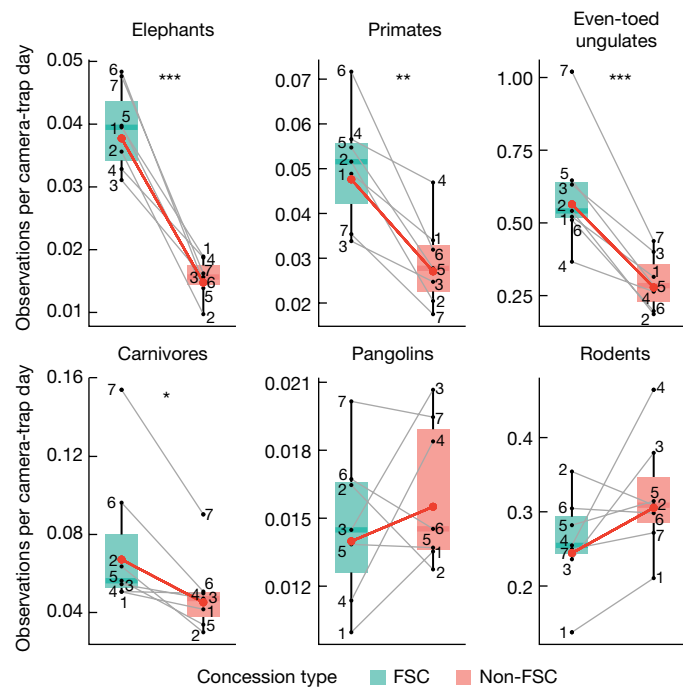


Fig. 5 | Mammal encounter rate across six taxonomic groups in paired FSC-certified and non-FSC concessions. Numbers represent paired FSC-certified ($n = 7$) and non-FSC ($n = 7$) concessions, red lines represent linear mixed model predicted fixed effects (certification status) and grey lines represent random effects (concession pairs). Data are represented as boxplots, where central lines represent medians and lower and upper lines correspond to the first and third quartiles, whiskers reflect 1.5 times the interquartile range. Pairwise comparisons were multivariate t adjusted. *** $P < 0.001$, ** $P < 0.01$, * $P < 0.05$. Exact P values are summarized in Extended Data Table 3. Note that the scales of the y axes vary.

Not all large species with reduced encounter rates may be commonly targeted for hunting but they are often indiscriminately affected by snaring²³. Non-FSC concessions contained proportionally more rodents and other small species than did FSC-certified concessions (Extended Data Table 2). The lack of hunting impacts on small mammal populations suggests some form of density compensation is in place: the hunting pressure on small mammal populations might be compensated by higher reproductive rates and/or a release from competition and predation in the non-FSC concessions^{24,25}.

A particularly strong effect of FSC certification was found for the critically endangered forest elephant, which is in line with previous findings¹⁴. The distribution of this species is driven almost entirely by human activity: they avoid areas that are unsafe to them^{26,27}. Their large home ranges can span several concessions²⁸, thus they may actively seek to reside not only in protected areas but also in FSC-certified concessions where measures to prevent illegal hunting are in place. This suggests that FSC-certified concessions may provide an important refuge for wide-ranging elephants. By contrast, no difference was found in pangolin encounter rate (they are among the most trafficked mammals²⁹) between the two types of logging regimes. Two out of the three pangolin species present in WEA are relatively small and generally have higher reproduction rates than mammals in larger size classes. Moreover, all three pangolin species had low encounter rates in our study (Extended Data Table 2), probably because two pangolin species are semi-arboreal and are therefore not effectively captured by ground-based camera traps, which reduces our ability to draw strong conclusions about these species and warrants further research. We did not observe a loss of species that were encountered frequently in either FSC-certified or non-FSC concessions, nor did we expect to. This

is because human population density in WEA is relatively low and the forests are still highly connected²⁰.

Conservation of large mammals through FSC certification brings wider benefits to forests, as these mammals play a pivotal role in ecological processes, including seed dispersal, seed predation, browsing, trampling, plant competition, nutrient cycling and predator–prey interactions³⁰. It has also been suggested that forest carbon storage is higher when large mammal assemblages are more intact because the ecological processes they are part of (such as seed dispersal) often benefit large, high wood density trees^{31–33} and the benefits of their conservation may far outweigh the cost³⁴. Furthermore, by reducing the amount of wild meat available for human consumption, FSC-certified concessions or similar stringent schemes may also reduce the chance of zoonotic disease transmission³⁵.

Methodological considerations

The FSC takes a comprehensive and all-encompassing perspective when it comes to managing and promoting sustainable forest management practices. This approach recognizes that forests are complex ecosystems with intricate interconnections between their various components, including flora, fauna, soil, water and climate. In logged tropical forests, controlling hunting is probably the most important factor for the reduction of environmental impacts⁷. We found more hunting signs in non-FSC concessions, which supports the interpretation that FSC effectively reduces hunting pressure, although counting hunting signs is likely to be a relatively weak measure of the quantification of hunting pressure³⁶. Hunting has long been known to be the most important driver of forest fauna decline in central African logged forests^{6,37} and the same phenomenon has been shown in Asia⁷. Of course, other factors such as retaining high conservation value areas and reduced impact logging practices are likely to contribute to the observed effects as well³⁸. Our data do not allow for causal inference of the association of any of the specific measures implemented by FSC companies with the observed effects, as that would require setting up more detailed measure-based experiments.

For the sections of the concessions that we sampled, we ensured comparability between paired concessions. We maximized the similarity in geographic covariates that may drive variation in mammal abundance—elevation and distances to roads, rivers, human settlements and protected areas—between each pair of FSC-certified and non-FSC concessions (Extended Data Fig. 2 and Extended Data Table 5). Although we believe that these covariates are important drivers of mammal abundance³⁹, including these covariates did not greatly improve the models, which underscores that camera grid locations were sufficiently similar in terms of these confounding influences. Precise logging intensity and logging history data per camera were not available for most concessions because the planning schemes of companies and actual exploitation of cutting blocks often did not match. Slight differences in logging history are not expected to have a large effect on the data because mammals are mobile and can return quickly to areas that have been exploited⁴⁰. Fourteen logging concessions may be a large sample size for tropical ecology studies¹⁷ but a low sample size from a statistical perspective. Nonetheless, despite the small number of replicates, we found clear and consistent differences in encounter rate between FSC-certified and non-FSC forests.

We used encounter rate, defined as the number of observations divided by the number of camera-trap days. Encounter rates may be affected by unaccounted influences on detection probabilities⁴¹, which may complicate comparisons between species or between sites. We compare individual species across management types, which renders differences in detection across species less relevant. For camera-trap sites, however, variation in visibility or other factors may affect the number of detections, even though mammal population sizes are similar. However, we found no differences in any relevant site covariates between treatments at the camera-trap level. Visibility at ground

level, slope, the presence of fruiting trees and small water courses around camera-trap locations did not differ between FSC-certified and non-FSC concessions (Extended Data Fig. 3 and Extended Data Table 5). We also compared the presence and type of trails or paths around camera-trap locations, which did not differ significantly except for the number of elephant paths, which was higher in FSC-certified concessions (Extended Data Fig. 4 and Extended Data Table 5). As camera traps were installed randomly at the predetermined GPS locations on the nearest tree with 4 m visibility, finding a higher frequency of elephant paths in FSC-certified concessions was, in itself, an indication of higher elephant abundance in FSC-certified concessions. Potential seasonal influences are accounted for by the paired design. It is, however, important to note that encounter rates are a mixed measure of abundance and activity and we cannot disentangle whether changes in encounter rate are the result of changes in abundance, activity—movement per day—or both. Species' home ranges and movement patterns can change in response to disturbance, which can affect encounter rates. It is, however, unlikely that changes in activity solely make up the observed differences in encounter rates, given the consistency of the data in the three heaviest body mass classes. We also estimate relative biomass using encounter rates, which is a useful proxy to assess differences between forest management types but cannot be interpreted as true biomass (Extended Data Fig. 1).

Conservation implications

Of central African tropical forest, 21% is designated for protection but only 15% of the species' ranges for central chimpanzees and the western lowland gorilla lie in protected areas^{42,43}. More than half of these species' ranges and a large part of the ranges of other mammals, such as forest elephants, lie in logging concessions²⁶. Protected areas are essential for conservation but sometimes lack the resources for effective control of illegal hunting^{44,45}. Logging companies often do have the means to protect forests and have an economic incentive to do so. We did not compare mammal encounter rates in protected areas with the same metric in logging concessions ourselves. However, our observed encounter rates for large mammals, which are the first species to disappear as a result of hunting and poaching, in FSC-certified concessions were comparable to published data from recently monitored protected areas in the same region^{46–48}. The ratio of large versus small forest antelopes in the FSC-certified concessions is furthermore comparable to such ratios in a protected area in the region with almost no hunting, whereas those in non-FSC concessions are far lower⁴⁹. Although the first priority for species protection should be to maintain unlogged forests where there is effective law enforcement, our results challenge the notion that, at least for large-bodied mammals in WEA, logging is always disastrous for wildlife^{50,51}. We show that, if selectively logged forests are properly managed, they can provide an important contribution to biodiversity: our results confirm that FSC-certified forests support far more larger and threatened species than do non-FSC forests. The results of this study are likely to be applicable to other logged tropical forests where hunting, through increased accessibility, poses a risk to forest mammals. This is because wildlife protection measures and law enforcement are applied across all FSC-certified forests, as part of the FSC principles, criteria and indicators for which FSC-certified companies are audited for compliance (Supplementary Tables 1 and 2). We infer this with caution as timber extraction volumes, concession size and shape, presence of public roads, population density and other characteristics may differ between concessions and thereby affect the impacts of FSC-certified forest management⁵².

Most terrestrial protected areas are isolated⁵³ and increasing human modification and fragmentation of landscapes is limiting the ability of mammals to move⁵⁴. Governments in forest-rich countries may enhance the effectiveness of conservation policies by requiring FSC certification in strategic locations, such as buffer zones around protected areas to reduce the edge-to-area ratio of the conservation landscape⁵⁵.

Non-FSC companies may also contribute to conservation, as they vary along a gradient of environmental and social responsibility⁵⁶. This was, however, not the focus of our study. Concessions in our study region are large, often larger than 2,000 km², and together with protected areas they can substantially contribute to mammal conservation. Well-managed logging concessions can contribute to Sustainable Development Goal (SDG) 12 (sustainable consumption and production) and SDG 15 (life on land) by performing a strategic function in preserving habitats and landscape connectivity while allowing for responsible economic activity⁵⁷.

Our findings indicate that the requirements of FSC certification lead to effective mitigation of direct and indirect influences of logging on tropical forest mammals. The control of widespread and unsustainable hunting and poaching which is facilitated by the increased access to forests engendered by timber extraction is probably a key determinant of this impact. However, not all hunting is illegal and FSC certification protects customary rights to hunt non-protected species for subsistence. Sustainability of this practice is controlled by—among other requirements—controlling firearm permits, spatially assigning hunting zones and monitoring wildlife offtake. We believe that a strict set of requirements, control of compliance and regular enforcement, all integrally connected and ensured in the FSC system, are crucial for successful environmental protection through forest certification.

The need to upscale certification

We present a clear, evidence-based message about the positive impact of FSC certification. We show that medium- to large-sized mammals—which play vital functions in forests—are more abundant in FSC-certified concessions than in non-FSC concessions. This study calls for action, reinforcing previous studies that called for more forest certification and land-use planning that takes conservation into account^{14,26,43,58}. To protect large mammals, we urge that FSC certification or similar stringent schemes become the norm, as conventional logging is likely to result in half-empty forests dominated by rodents and other small species. To increase logging companies' interest in FSC certification, it is essential that sufficient demand is created for FSC-certified products by institutional and individual buyers. The information put forward by this study can play an important role in FSC's global strategy to leverage sustainable finance to reduce biodiversity loss, whereby certificate holders can be rewarded for the biodiversity benefits that they incur⁵⁹. Rendering FSC-certified forests eligible for payments by biodiversity schemes, especially driven by government regulation⁶⁰, can contribute to fair valuation of standing forests. To ensure environmentally and socially responsible forest management practices¹⁰, we strongly support the application of regulatory frameworks which stimulate and require the selling and buying of timber certified by FSC or similar stringent schemes.

Online content

Any methods, additional references, Nature Portfolio reporting summaries, source data, extended data, supplementary information, acknowledgements, peer review information; details of author contributions and competing interests; and statements of data and code availability are available at <https://doi.org/10.1038/s41586-024-07257-8>.

1. Blaser, J., Sarre, A., Poore, D. & Johnson, S. *Status of Tropical Forest Management 2011* (ITTO, 2011).
2. Romero, C. et al. Evaluation of the impacts of Forest Stewardship Council (FSC) certification of natural forest management in the tropics: a rigorous approach to assessment of a complex conservation intervention. *Int. For. Rev.* **19**, 36–49 (2018).
3. van der Ven, H. & Cashore, B. Forest certification: the challenge of measuring impacts. *Curr. Opin. Environ. Sustain.* **32**, 104–111 (2018).
4. Benítez-López, A. et al. The impact of hunting on tropical mammal and bird populations. *Science* **356**, 180–183 (2017).
5. Kleinschroth, F., Laporte, N., Laurance, W. F., Goetz, S. J. & Ghazoul, J. Road expansion and persistence in forests of the Congo Basin. *Nat. Sustain.* **2**, 628–634 (2019).

6. Leisher, C. et al. Ranking the direct threats to biodiversity in sub-Saharan Africa. *Biodivers. Conserv.* **31**, 1329–1343 (2022).
7. Tilker, A. et al. Habitat degradation and indiscriminate hunting differentially impact faunal communities in the Southeast Asian tropical biodiversity hotspot. *Commun. Biol.* **2**, 396 (2019).
8. Abernethy, K. A., Coad, L., Taylor, G., Lee, M. E. & Maisels, F. Extent and ecological consequences of hunting in Central African rainforests in the twenty-first century. *Phil. Trans. R. Soc. B* **368**, 20120303 (2013).
9. Tritsch, I. et al. Do forest-management plans and FSC certification help avoid deforestation in the Congo Basin? *Ecol. Econ.* **175**, 106660 (2020).
10. Cerutti, P. O. et al. *Social Impacts of the Forest Stewardship Council Certification* (Center for International Forestry Research, 2014).
11. Roopsind, A., Caughlin, T. T., Sambhu, H., Fragoso, J. M. V. & Putz, F. E. Logging and indigenous hunting impacts on persistence of large neotropical animals. *Biotropica* **49**, 565–575 (2017).
12. Tobler, M. W. et al. Do responsibly managed logging concessions adequately protect jaguars and other large and medium-sized mammals? Two case studies from Guatemala and Peru. *Biol. Conserv.* **220**, 245–253 (2018).
13. Bahaa-el-din, L. et al. Effects of human land-use on Africa's only forest-dependent felid: the African golden cat *Caracal aurata*. *Biol. Conserv.* **199**, 1–9 (2016).
14. Stokes, E. J. et al. Monitoring great ape and elephant abundance at large spatial scales: measuring effectiveness of a conservation landscape. *PLoS ONE* **5**, e10294 (2010).
15. Polisar, J. et al. Using certified timber extraction to benefit jaguar and ecosystem conservation. *Ambio* **46**, 588–603 (2017).
16. Sollmann, R. et al. Quantifying mammal biodiversity co-benefits in certified tropical forests. *Divers. Distrib.* **23**, 317–328 (2017).
17. Ramage, B. S. et al. Pseudoreplication in tropical forests and the resulting effects on biodiversity conservation. *Conserv. Biol.* **27**, 364–372 (2013).
18. Burivalova, Z., Hua, F., Koh, L. P., Garcia, C. & Putz, F. A critical comparison of conventional, certified and community management of tropical forests for timber in terms of environmental, economic and social variables. *Conserv. Lett.* **10**, 4–14 (2017).
19. Campos-Cerqueira, M. et al. How does FSC forest certification affect the acoustically active fauna in Madre de Dios, Peru? *Remote Sens. Ecol. Conserv.* <https://doi.org/10.1002/rse2.120> (2019).
20. Grantham, H. S. et al. Spatial priorities for conserving the most intact biodiverse forests within Central Africa. *Environ. Res. Lett.* **15**, 0940b5 (2020).
21. Atwood, T. B. et al. Herbivores at the highest risk of extinction among mammals, birds and reptiles. *Sci. Adv.* **6**, eabb8458 (2020).
22. Cardillo, M. et al. Multiple causes of high extinction risk in large mammal species. *Science* **309**, 1239–1241 (2005).
23. Figel, J. J., Hambal, M., Krisna, I., Putra, R. & Yansyah, D. Malignant snare traps threaten an irreplaceable megafauna community. *Trop. Conserv. Sci.* **14**, 1940082921989187 (2021).
24. Yasuoka, H. et al. Changes in the composition of hunting catches in southeastern Cameroon: a promising approach for collaborative wildlife management between ecologists and local hunters. *Ecol. Soc.* **20**, 25 (2015).
25. Peres, C. A. & Dolman, P. M. Density compensation in neotropical primate communities: evidence from 56 hunted and nonhunted Amazonian forests of varying productivity. *Oecologia* **122**, 175–189 (2000).
26. Maisels, F. et al. Devastating decline of forest elephants in Central Africa. *PLoS ONE* **8**, e59469 (2013).
27. Wall, J. et al. Human footprint and protected areas shape elephant range across Africa. *Curr. Biol.* **31**, 2437–2445 (2021).
28. Beirne, C. et al. African forest elephant movements depend on time scale and individual behavior. *Sci. Rep.* **11**, 12634 (2021).
29. Challender, D. W. S., Heinrich, S., Shepherd, C. R. & Katsis, L. K. D. in *Pangolins* (eds Challender, D. W. S. et al.) 259–276 (Academic, 2020).
30. Rogers, H. S., Donoso, I., Traveset, A. & Fricke, E. C. Cascading impacts of seed disperser loss on plant communities and ecosystems. *Annu. Rev. Ecol. Evol. Syst.* **52**, 641–666 (2021).
31. Bello, C. et al. Defaunation affects carbon storage in tropical forests. *Sci. Adv.* **1**, e1501105 (2015).
32. Chanthorn, W. et al. Defaunation of large-bodied frugivores reduces carbon storage in a tropical forest of Southeast Asia. *Sci. Rep.* **9**, 10015 (2019).
33. Berzaghi, F., Bretagnolle, F., Durand-Bessart, C. & Blake, S. Megaherbivores modify forest structure and increase carbon stocks through multiple pathways. *Proc. Natl Acad. Sci. USA* **120**, e2201832120 (2023).
34. Berzaghi, F., Chami, R., Cosimano, T. & Fullenkamp, C. Financing conservation by valuing carbon services produced by wild animals. *Proc. Natl Acad. Sci. USA* **119**, e2120426119 (2022).
35. Johnson, C. K. et al. Global shifts in mammalian population trends reveal key predictors of virus spillover risk. *Proc. R. Soc. B* **287**, 20192736 (2020).
36. Ibbett, H. et al. Experimentally assessing the effect of search effort on snare detectability. *Biol. Conserv.* **247**, 108581 (2020).
37. Wilkie, D. S., Sidle, J. G., Boundzanga, G. C., Auzel, P. & Blake, S. in *The Cutting Edge* (eds Fimbel, R. A. et al.) 375–400 (Columbia Univ. Press, 2001).
38. Bicknell, J. E., Struebig, M. J. & Davies, Z. G. Reconciling timber extraction with biodiversity conservation in tropical forests using reduced-impact logging. *J. Appl. Ecol.* **52**, 379–388 (2015).
39. Laméris, D. W., Tagg, N., Kuenbou, J. K., Sterck, E. H. M. & Willie, J. Drivers affecting mammal community structure and functional diversity under varied conservation efforts in a tropical rainforest in Cameroon. *Anim. Conserv.* **23**, 182–191 (2020).
40. Morgan, D. et al. African apes coexisting with logging: comparing chimpanzee (*Pan troglodytes troglodytes*) and gorilla (*Gorilla gorilla gorilla*) resource needs and responses to forestry activities. *Biol. Conserv.* **218**, 277–286 (2018).
41. Sollmann, R., Mohamed, A., Samejima, H. & Wiltling, A. Risky business or simple solution—relative abundance indices from camera-trapping. *Biol. Conserv.* **159**, 405–412 (2013).
42. Doumenge, C., Palla, F., Madzous, I. & Ludovic, G. (eds) *State of Protected Areas in Central Africa: 2020* (OFAC-COMIFAC, Yaounde, Cameroon & IUCN, 2021).
43. Strindberg, S. et al. Guns, germs and trees determine density and distribution of gorillas and chimpanzees in Western Equatorial Africa. *Sci. Adv.* **4**, eaar2964 (2018).
44. Laurance, W. F. et al. Averting biodiversity collapse in tropical forest protected areas. *Nature* **489**, 290–293 (2012).
45. Poulsen, J. R. et al. Poaching empties critical Central African wilderness of forest elephants. *Curr. Biol.* **27**, R134–R135 (2017).
46. Poulain, F. et al. A camera trap survey in the community zone of Lobéké National Park (Cameroon) reveals a nearly intact mammalian community. *Afr. J. Ecol.* **61**, 523–529 (2023).
47. Hedwig, D. et al. A camera trap assessment of the forest mammal community within the transitional savannah–forest mosaic of the Batéké Plateau National Park, Gabon. *Afr. J. Ecol.* **56**, 777–790 (2018).
48. Bruce, T. et al. Using camera trap data to characterise terrestrial larger-bodied mammal communities in different management sectors of the Dja Faunal Reserve, Cameroon. *Afr. J. Ecol.* **56**, 759–776 (2018).
49. Breuer, T., Breuer-Ndoundou Hockemba, M., Opepa, C. K., Yoga, S. & Mavinga, F. B. High abundance and large proportion of medium and large duikers in an intact and unhunted afro-tropical protected area: insights into monitoring methods. *Afr. J. Ecol.* **59**, 399–411 (2021).
50. Potapov, P. et al. The last frontiers of wilderness: tracking loss of intact forest landscapes from 2000 to 2013. *Sci. Adv.* **3**, e1600821 (2017).
51. Gibson, L. et al. Primary forests are irreplaceable for sustaining tropical biodiversity. *Nature* **478**, 378–381 (2011).
52. Burivalova, Z., Şekercioğlu, Ç. H. & Koh, L. P. Thresholds of logging intensity to maintain tropical forest biodiversity. *Curr. Biol.* **24**, 1893–1898 (2014).
53. Ward, M. et al. Just ten percent of the global terrestrial protected area network is structurally connected via intact land. *Nat. Commun.* **11**, 4563 (2020).
54. Brennan, A. et al. Functional connectivity of the world's protected areas. *Science* **376**, 1101–1104 (2022).
55. Clark, C. J., Poulsen, J. R., Malonga, R. & Elkan, P. W. Logging concessions can extend the conservation estate for Central African tropical forests. *Conserv. Biol.* **23**, 1281–1293 (2009).
56. Rayden, T. & Essono, R. E. *Evaluation of the Management of Wildlife in the Forestry Concessions Around the National Parks of Lopé, Waka and Ivindo* (WWF, 2010).
57. Edwards, D. P., Tobias, J. A., Sheil, D., Meijaard, E. & Laurance, W. F. Maintaining ecosystem function and services in logged tropical forests. *Trends Ecol. Evol.* **29**, 511–520 (2014).
58. Nasi, R., Billand, A. & van Vliet, N. Managing for timber and biodiversity in the Congo Basin. *For. Ecol. Manag.* **268**, 103–111 (2012).
59. *FSC Global Strategy 2021–2026: Demonstrating the Value and Benefits of Forest Stewardship* (FSC, 2020).
60. Salzman, J., Bennett, G., Carroll, N., Goldstein, A. & Jenkins, M. The global status and trends of payments for ecosystem services. *Nat. Sustain.* **1**, 136–144 (2018).

Publisher's note Springer Nature remains neutral with regard to jurisdictional claims in published maps and institutional affiliations.



Open Access This article is licensed under a Creative Commons Attribution 4.0 International License, which permits use, sharing, adaptation, distribution and reproduction in any medium or format, as long as you give appropriate credit to the original author(s) and the source, provide a link to the Creative Commons licence, and indicate if changes were made. The images or other third party material in this article are included in the article's Creative Commons licence, unless indicated otherwise in a credit line to the material. If material is not included in the article's Creative Commons licence and your intended use is not permitted by statutory regulation or exceeds the permitted use, you will need to obtain permission directly from the copyright holder. To view a copy of this licence, visit <http://creativecommons.org/licenses/by/4.0/>.

© The Author(s) 2024

Methods

Data collection

We set up arrays of camera traps from 2018 to 2021 in 14 logging concessions owned by 11 different companies (5 FSC and 6 non-FSC) in Gabon and the Republic of Congo (Fig. 1). Seven FSC-certified concessions were each paired to the closest non-FSC concession that was similar in terms of terrain and forest type²⁰. All concessions are situated in a matrix of connected forests. In each pair of concessions, camera traps (Bushnell Trophy Cam HD for pairs 1–6 and Browning 2018 Spec Ops Advantage for pair 7) were deployed simultaneously to account for seasonal differences, for 2–3 months. There was one exception where Covid restrictions obliged the cameras to remain in place for longer (Extended Data Table 1). Camera-trap grid locations in each pair of concessions were chosen on the basis of similarity between potential drivers of mammal abundance, including distance to settlements, roads, rivers, protected areas, elevation (Extended Data Fig. 2 and Extended Data Table 5) and time since logging (2–10 years before our study), although some camera grids overlapped older logging blocks. Camera traps were set out in systematic, 1 km spaced grids with a random start point. On reaching the predetermined GPS locations, the first potential installation location was used where cameras had at least 4 m of visibility. This ensured that each grid was representative of environmental heterogeneity: that is, not specifically targeting or ignoring trails or other landscape elements that could influence detection⁶¹. The 1 km intercamera distance exceeds most species' home range sizes to avoid spatial autocorrelation. Species were not expected to migrate within the sampling duration of the study. Between 28 and 36 cameras were deployed in each concession, totalling 474 camera traps, distributed over 474 km² (Extended Data Table 1). Cameras were installed at a height of 30 cm to enable observations of mammals of all sizes. Cameras were programmed to take bursts of three photos to maximize the chance of detection and to take a photo every 12 h for correct calculation of active days in the event of a defect before the end of the deployment period. For each camera, we recorded whether there was an elephant path, skidder trail, small wildlife trail or an absence of a trail or path, in the field of view of each camera (Extended Data Fig. 4 and Extended Data Table 5). We also visually estimated forest visibility (0–10 m, 11–20 m, greater than 20 m), slope (0–5°, 5–20°, greater than 20°), presence of fruiting trees within 30 m and presence of small water courses within 50 m (Extended Data Fig. 3 and Extended Data Table 1). When approaching each predefined camera point, we counted cartridges, snares and hunting camps from 500 m before the camera up to its location. Various field teams were employed in different concessions and hence there may be some influence of interobserver bias of hunting observations between sites.

Photo processing and data analysis

Camera-trap efforts yielded 1,278,853 photos, including 645,165 photos with animals. All photos were annotated in the program Wild.ID v.1.0.1. We identified animals up to the species level if photo quality permitted and otherwise designated the species as 'indet'⁶². As reliable species identification of small mammals is difficult, they were grouped into squirrels, rats and mice and shrews. Rare observations of humans, birds, bats, reptiles and domestic dogs were excluded from the analyses.

Observations of the same species that were at least 10 min apart were considered as separate detections. We assessed the sensitivity of this threshold by calculating the number of detections for intervals of 10, 30, 60 and 1,440 min, which all yielded proportionally similar numbers of observations across body mass classes (Supplementary Table 3). When several animals were observed, the number of individuals was determined by taking the highest number of individuals in a photo within the 10 min threshold. Sampling effort was defined as the number of camera days minus downtime due to malfunctioning cameras or obstruction of vision by vegetation.

Mammal behaviour may be different in hunted concessions, as mammals may be shyer of non-natural objects such as camera traps, which could in turn negatively affect their probability of detection. If this dynamic existed, shyness was assumed to fade over time with habituation to the materials, resulting in an increase of observations over time. We tested for an interaction between certification status and the number of observations over time using a linear model with a log-transformed number of observations for the first 68 days of all deployments, as that was the shortest concession deployment period, ensuring that all concessions were equally represented. We did not find that certification status was related to a trend in observations over time (Extended Data Fig. 5). We recognize, however, that other factors may have influenced detection probability, such as movement rates, which may be affected by hunting.

For each species for each concession, we calculated encounter rate, weighted by group size, as the number of observations divided by the sampling effort and we reported all findings using the metric 'observations per camera-trap day'. Encounter rate was calculated for all species combined, per body mass class, per IUCN Red List category⁶³ and per taxonomic group. Body mass of each species was determined by taking the mean across sexes⁶². Taxonomic groups Hyracoidea and Tubulidentata were excluded from the taxonomic analysis because of low sample sizes. Shrews were included as rodents in the taxonomy analysis even though they are formally not rodents because they are difficult to distinguish from mice. We consider this acceptable given that shrews are functionally very similar to rodents in the light of this study. To study the impact of certification on total estimated faunal biomass, the encounter rate of each species was multiplied by its average body mass divided by the sampling effort.

To assess whether encounter rates varied between FSC-certified and non-FSC concessions, we quantified the means of the paired concessions using linear mixed-effects models with concession pairs, concessions and cameras as random effects, whereby cameras were nested in concessions, in concession pairs, in a multilevel random effect structure. We allowed the means of concession pairs to vary between body mass class, IUCN Red List category and taxonomic group, if supported by model selection. We tested whether potential drivers of mammal abundance (Extended Data Figs. 2, 3 and 4) were important using a model-selection approach based on minimization of Bayesian information criterion values (Supplementary Table 4). We found that the inclusion of geographic covariates did not substantially improve the model for body mass classes, taxonomic groups and IUCN categories. Only for all mammals pooled together, the inclusion of elevation and distance to rivers resulted in slightly improved models but differences were negligible and did not support strong evidence for a significant influence of these covariates⁶⁴. Quadratic geographic covariate terms and camera-trap site covariates did not result in better models. Pairwise comparisons were multivariate *t* adjusted. We used two-sided Wilcoxon signed-rank tests for all other analyses (Extended Data Table 5). Statistical analyses were performed in R v.4.2.2.

Reporting summary

Further information on research design is available in the Nature Portfolio Reporting Summary linked to this article.

Data availability

The data that support the findings of this study are available in the Zenodo repository under <https://doi.org/10.5281/zenodo.10061155> (ref. 65). Source data are provided with this paper.

Code availability

R code for statistical analyses and data tables are available in the Zenodo repository under <https://doi.org/10.5281/zenodo.10061155> (ref. 65).

Article

61. Zwerts, J. A. et al. Methods for wildlife monitoring in tropical forests: comparing human observations, camera traps and passive acoustic sensors. *Conserv. Sci. Pract.* **3**, e568 (2021).
62. Kingdon, J. *The Kingdon Field Guide to African Mammals* (Bloomsbury, 2015).
63. *The IUCN Red List of Threatened Species Version 2022-1* (IUCN, accessed 10 August 2022).
64. Anderson, D. R. *Model Based Inference in the Life Sciences: A Primer on Evidence* Vol. 31 (Springer, 2008).
65. Zwerts, J. A. FSC-certified forest management benefits large mammals compared to non-FSC. *Zenodo* <https://doi.org/10.5281/zenodo.10061155> (2023).

Acknowledgements We thank the logging companies for access to their concessions, 263 people from WEA for fieldwork assistance and 23 students and assistants for data processing. We also thank Y. Hautier for his insights concerning the statistical analyses. The work was carried out with permission from the Gabonese Centre National de la Recherche Scientifique et Technologique (CENAREST) under research permit no. AV AR0046/18 and the Congolese Institut National de Recherche Forestière under research permit nos. 219 and 126 issued by the National Forest Research Institute (IRF) of Congo with the help of the Wildlife Conservation Society (WCS) Congo, under no. 219MRSIT/IRF/DG/DS on 17 July 2019 and the extension under no. 126MRSIT/IRF/DG/DS on 4 August 2020. J.A.Z. received support for this work from the Dutch Research Council NWO through the graduate programme Nature Conservation, Management and Restoration (grant no. 022.006.011), Programme de Promotion de l'Exploitation Certifiée des Forêts (PPECF) de la COMIFAC (à travers la KfW) under grant no. C146, WWF Netherlands, WWF Germany and the Prince Bernhard Chair for International Nature Conservation of Utrecht University.

Author contributions J.A.Z., M.v.K., J.v.d.W. and G.B.T. conceptualized this article. J.A.Z., E.A.M.G. and H.F.D.Z. were responsible for data curation. J.A.Z. and E.A.M.G. conducted the formal analysis. J.A.Z., M.v.K., E.A.M.G., E.H.M.S. and P.A.V. developed the methodology. J.A.Z. and H.F.D.Z. undertook investigations. J.A.Z. and E.A.M.G. created the visualizations. P.A.V., J.A.Z., M.v.K. and J.v.d.W. acquired funding. J.A.Z. and G.B.T. were responsible for project administration. J.A.Z., M.v.K., G.B.T., E.H.M.S., P.A.V. and F.M. supervised the work. J.A.Z. wrote the original draft manuscript. J.A.Z., M.v.K., J.v.d.W., F.M., G.B.T., P.A.V. and E.H.M.S. reviewed and edited the final article.

Competing interests J.A.Z. is an unpaid individual member of the FSC Environmental chamber, sub-chamber North. G.B.T. is an unpaid individual member of the FSC Environmental chamber, sub-chamber South and, since 2018, also a member of an advisory committee to the Board of Directors of FSC, the Policy and Standard Committee. J.v.d.W. and H.F.D.Z. have unpaid institutional membership of FSC through WWF International. The remaining authors declare no competing interests.

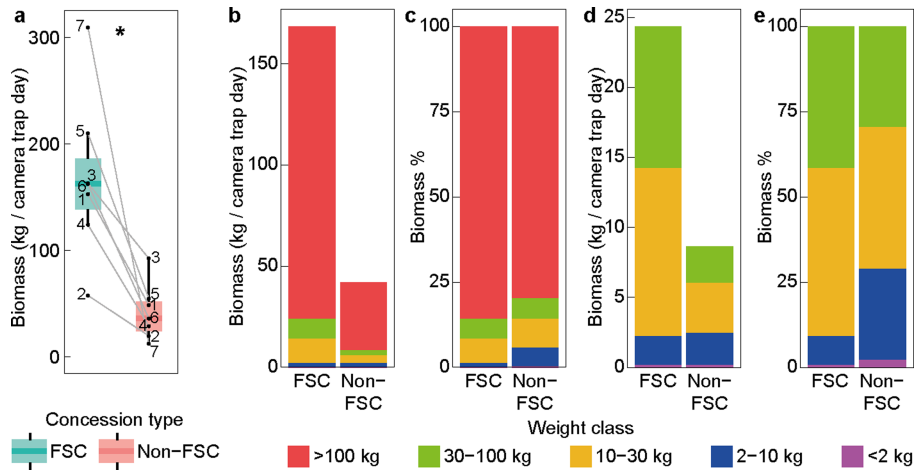
Additional information

Supplementary information The online version contains supplementary material available at <https://doi.org/10.1038/s41586-024-07257-8>.

Correspondence and requests for materials should be addressed to Joeri A. Zwerts.

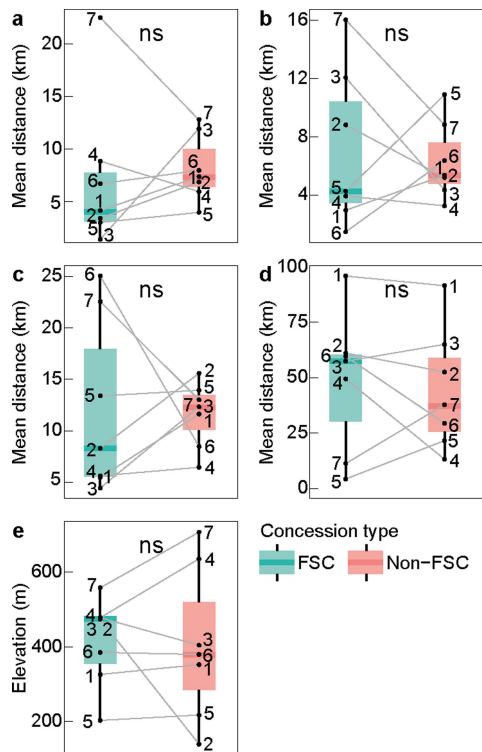
Peer review information *Nature* thanks Julia Fa, Roland Kays and the other, anonymous, reviewer(s) for their contribution to the peer review of this work. Peer reviewer reports are available.

Reprints and permissions information is available at <http://www.nature.com/reprints>.

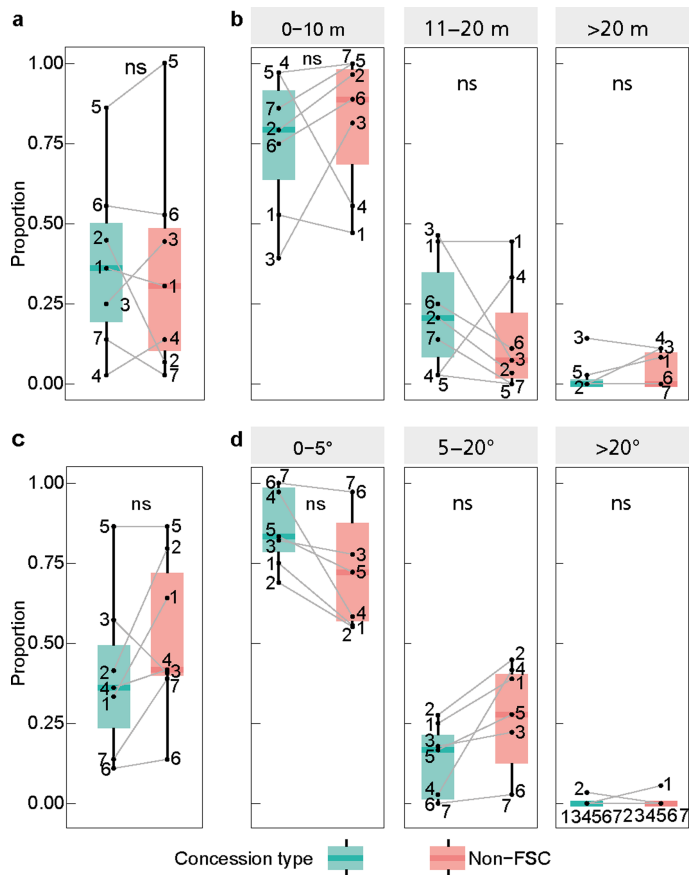


Extended Data Fig. 1 | Estimated faunal biomass derived from mammal encounter rates. (a) Estimated faunal biomass was higher ($p = 0.016$) in FSC-certified ($n = 7$) than in non-FSC concessions ($n = 7$). Numbers represent paired FSC-certified and non-FSC concessions linked by grey lines. Data is represented as a boxplot, where central lines represent medians and lower and upper lines correspond to the first and third quartiles, whiskers reflect 1.5 times the interquartile range. Two-sided Wilcoxon signed-rank, *: $p < 0.05$. Panels (b–e) represent the contributions of different body mass classes to the

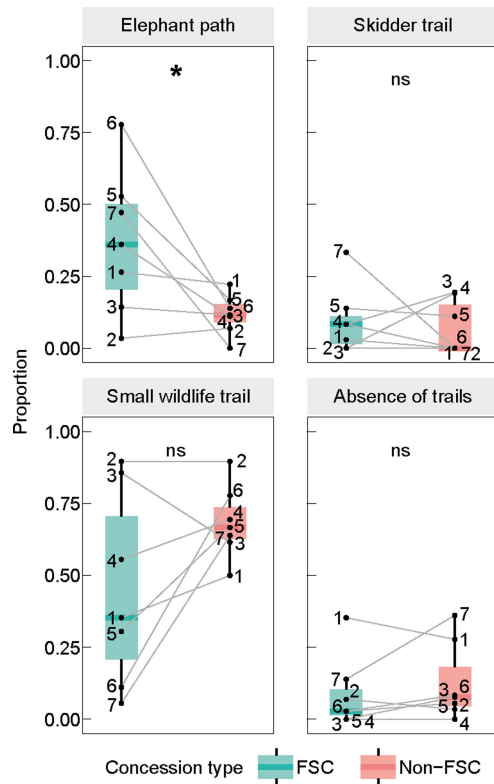
estimated faunal biomass derived from mammal encounter rates in FSC-certified ($n = 7$) and non-FSC concessions ($n = 7$). (b) in kg / camera-trap day; (c) as a proportion of total faunal biomass; (d) in kg / day for species up to 100 kg; (e) as a proportion of the total faunal biomass for species up to 100 kg. FSC-certified concessions had higher overall biomass whereby mammals weighing more than 10 kg made up a larger proportion of the total biomass than in non-FSC concessions.



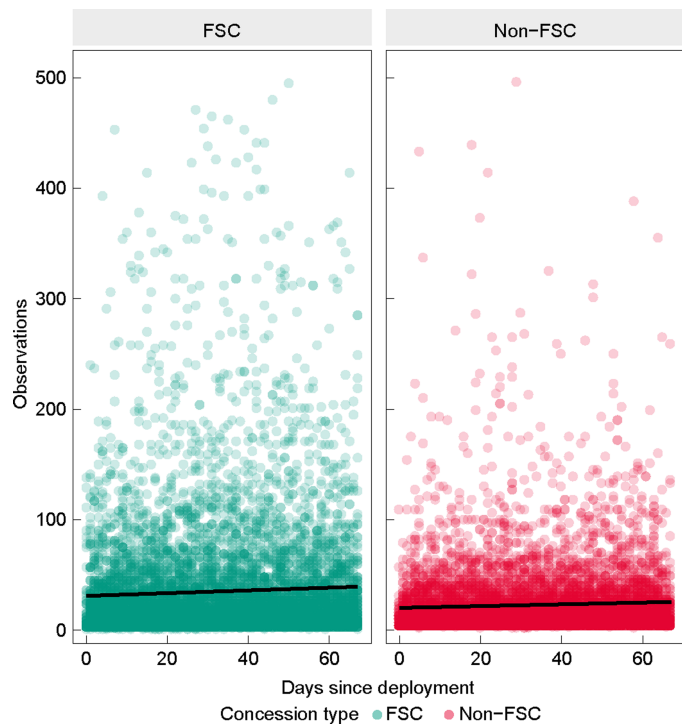
Extended Data Fig. 2 | Geographic covariates. (a) Distance to roads, (b) rivers, (c) human settlements, (d) and protected areas, as well as (e) elevation, did not differ significantly between camera locations in FSC-certified (n = 7) and non-FSC concessions (n = 7). Numbers represent paired FSC-certified and non-FSC concessions linked by grey lines. Data are represented as boxplots, where central lines represent medians and lower and upper lines correspond to the first and third quartiles, whiskers reflect 1.5 times the interquartile range. Two-sided Wilcoxon signed-rank, ns: $p > 0.05$. Exact p-values are summarized in Extended Data Table 4.



Extended Data Fig. 3 | Camera trap site covariates. (a) The presence of fruiting trees within 30 m, (b) visibility, (c) the presence of small water courses within 50 m distance and (d) slope, expressed in proportions, did not differ significantly between camera locations in FSC-certified ($n = 7$) and non-FSC concessions ($n = 7$). Numbers represent paired FSC-certified and non-FSC concessions linked by grey lines. Data are represented as boxplots, where central lines represent medians and lower and upper lines correspond to the first and third quartiles, whiskers reflect 1.5 times the interquartile range. Two-sided Wilcoxon signed-rank, ns: $p > 0.05$. Exact p-values are summarized in Extended Data Table 4.



Extended Data Fig. 4 | The presence of trails or paths in the field of view of randomly placed cameras. Each camera trap installation location was characterized as either an elephant path, skidder trail, small wildlife trail or as an absence of a trail or path. Only elephant paths, expressed in proportions, were encountered more often in FSC-certified concessions (n = 7) than in non-FSC concessions (n = 7), whereas the presence or absence of the other three types of installation locations was equivalent between the two forest management types. Camera trap sites were selected as the closest location from the predetermined GPS locations with both a suitable tree and a minimum of four metres visibility. Following this method, randomly encountering more elephant paths is in itself an indication of higher elephant abundances in FSC-certified concessions. Numbers represent paired FSC-certified and non-FSC concessions linked by grey lines. Data are represented as boxplots, where central lines represent medians and lower and upper lines correspond to the first and third quartiles, whiskers reflect 1.5 times the interquartile range. Two-sided Wilcoxon signed-rank, *: $p < 0.05$, ns: $p > 0.05$. Exact p-values are summarized in Extended Data Table 4.



Extended Data Fig. 5 | Observations over time. This analysis explored whether variation in hunting induced mammal shyness for non-natural objects influenced detection differentially in FSC-certified ($n = 7$) and non-FSC concessions ($n = 7$). We did not find support for an effect of certification status on the number of observations over time. Linear model: $p = 0.892$.

Article

Extended Data Table 1 | Camera trap deployment sites and periods

Pair	Country	Type	Number of cameras	Deployment period	Total deployment time (days)	Effort (days)
1	Gabon	FSC	36	Dec 2018 – Mar 2019	2,597	2,453
1	Gabon	Non-FSC	36	Nov 2018 – Mar 2019	1,960	1,960
2	Gabon	Non-FSC	29	Apr 2019 – Jul 2019	2,128	2,128
2	Gabon	FSC	29	Mar 2019 – Jun 2019	2,070	2,030
3	Gabon	Non-FSC	28	Apr 2019 – Jul 2019	1,264	1,258
3	Gabon	FSC	28	Mar 2019 – Jun 2019	1,172	1,087
4	Gabon	FSC	36	Jul 2019 – Oct 2019	3,041	3,007
4	Gabon	Non-FSC	36	Jun 2019 – Oct 2019	3,071	2,962
5	Gabon	FSC	36	Oct 2019 – Jan 2020	2,186	2,148
5	Gabon	Non-FSC	36	Nov 2019 – Jan 2020	2,092	2,087
6	Congo	FSC	36	Mar 2020 – Oct 2020	5,277	4,554
6	Congo	Non-FSC	36	Feb 2020 – Oct 2020	5,558	5,208
7	Congo	FSC	36	Mar 2021 – Jun 2021	2,537	2,532
7	Congo	Non-FSC	36	Mar 2021 – Jun 2021	2,132	2,132
Total			474		37,085	35,546
Average per site			34		2,649	2,539

The number of cameras was defined as the number of cameras that were deployed in a concession. The period of deployment was noted as the month and year the first camera trap was placed and last camera trap was recuperated. The total deployment time was calculated by taking the sum of all active camera-trap days per site. The effort is the total deployment time of a site minus the time camera traps were malfunctioning or covered by vegetation. All sites were deployed for two to three months with one exception where Covid travel restrictions resulted in the cameras remaining in place for longer. The companies are not named to assure anonymity: this was a prerequisite for several companies to participate in the study.

Extended Data Table 2 | Observed mammals

Species names	Taxonomy	Body mass (kg)	IUCN	Observed mean encounter rate FSC (\pm SEM)	Observed mean encounter rate non-FSC (\pm SEM)
<i>Cephalophus callipygus</i>	Even-toed ungulates	21.35	LC	0.322 (\pm 0.138)	0.065 (\pm 0.026)
<i>Philantomba monticola</i>	Even-toed ungulates	6.25	LC	0.229 (\pm 0.036)	0.285 (\pm 0.048)
Squirrels	Rodents	0.27	LC	0.186 (\pm 0.022)	0.158 (\pm 0.033)
<i>Atherurus africanus</i>	Rodents	3.25	LC	0.105 (\pm 0.027)	0.117 (\pm 0.012)
Mice and shrews	Rodents	0.010	LC	0.083 (\pm 0.027)	0.097 (\pm 0.037)
<i>Potamochoerus porcus</i>	Even-toed ungulates	80	LC	0.082 (\pm 0.044)	0.018 (\pm 0.005)
<i>Cephalophus dorsalis</i>	Even-toed ungulates	19.75	NT	0.077 (\pm 0.032)	0.034 (\pm 0.009)
<i>Cephalophus ogilbyi</i>	Even-toed ungulates	17	LC	0.075 (\pm 0.053)	0.023 (\pm 0.015)
<i>Cricetomys emini</i>	Rodents	1.2	LC	0.067 (\pm 0.033)	0.092 (\pm 0.031)
<i>Loxodonta cyclotis</i>	Elephants	2150	CR	0.066 (\pm 0.012)	0.015 (\pm 0.005)
<i>Cephalophus indet</i>	Even-toed ungulates	18.32	LC	0.062 (\pm 0.018)	0.033 (\pm 0.013)
<i>Cephalophus silvicultor</i>	Even-toed ungulates	62.5	NT	0.041 (\pm 0.014)	0.008 (\pm 9.44e-04)
<i>Mandrillus sphinx</i>	Primates	18.5	VU	0.031 (\pm 0.015)	0.019 (\pm 0.010)
Rats	Rodents	0.14	LC	0.027 (\pm 0.017)	0.060 (\pm 0.029)
<i>Genetta servalina</i>	Carnivores	1.85	LC	0.026 (\pm 0.006)	0.021 (\pm 0.005)
<i>Bdeogale nigripes</i>	Carnivores	2.75	LC	0.021 (\pm 0.005)	0.009 (\pm 0.003)
<i>Hyemoschus aquaticus</i>	Even-toed ungulates	10.85	LC	0.021 (\pm 0.008)	0.011 (\pm 0.006)
<i>Pan troglodytes</i>	Primates	31.5	EN	0.019 (\pm 0.006)	0.011 (\pm 0.003)
<i>Xenogale naso</i>	Carnivores	3.6	LC	0.019 (\pm 0.013)	0.007 (\pm 0.002)
<i>Atilax paludinosus</i>	Carnivores	3.5	LC	0.014 (\pm 0.006)	0.006 (\pm 0.002)
<i>Cephalophus leucogaster</i>	Even-toed ungulates	17.5	NT	0.012 (\pm 0.003)	0.002 (\pm 8.27e-04)
<i>Gorilla gorilla</i>	Primates	116.5	CR	0.010 (\pm 0.003)	0.004 (\pm 0.001)
<i>Cephalophus nigrifrons</i>	Even-toed ungulates	16	LC	0.008 (\pm 0.005)	4.02e-04 (\pm 4.02e-04)
<i>Cercocebus agilis</i>	Primates	7.83	LC	0.008 (\pm 0.005)	0.002 (\pm 0.002)
<i>Caracal aurata</i>	Carnivores	10.1	VU	0.006 (\pm 0.002)	6.84e-04 (\pm 2.12e-04)
<i>Nandinia binotata</i>	Carnivores	2.6	LC	0.005 (\pm 0.001)	0.007 (\pm 0.002)
<i>Panthera pardus</i>	Carnivores	53.25	VU	0.004 (\pm 0.001)	0.002 (\pm 6.14e-04)
<i>Phataginus tricuspis</i>	Pangolins	2.3	EN	0.004 (\pm 0.002)	0.004 (\pm 0.002)
<i>Crossarchus platycephalus</i>	Carnivores	1.25	LC	0.004 (\pm 0.002)	0.006 (\pm 0.002)
<i>Cercocebus torquatus</i>	Primates	8.13	EN	0.003 (\pm 0.003)	0.002 (\pm 0.002)
<i>Phataginus tetradactyla</i>	Pangolins	2.9	VU	0.002 (\pm 8.49e-04)	0.004 (\pm 0.001)
<i>Smutsia gigantea</i>	Pangolins	32.5	EN	0.002 (\pm 4.07e-04)	0.001 (\pm 4.12e-04)
<i>Cercopithecus nictitans</i>	Primates	5.53	NT	0.001 (\pm 7.86e-04)	3.62e-04 (\pm 3.32e-04)
<i>Syncerus caffer</i>	Even-toed ungulates	637.5	NT	8.52e-04 (\pm 3.98e-04)	7.05e-04 (\pm 3.32e-04)
<i>Civettictis civetta</i>	Carnivores	13.5	LC	6.38e-04 (\pm 5.10e-04)	0
<i>Orycteropus afer</i>	Tubulidentata*	61	LC	5.55e-04 (\pm 5.20e-04)	0
<i>Cercopithecus indet</i>	Primates	4.13	NT	4.43e-04 (\pm 3.90e-04)	1.91e-04 (\pm 1.04e-04)
<i>Euoticus elegantulus</i>	Primates	0.32	LC	4.39e-04 (\pm 2.11e-04)	4.59e-04 (\pm 4.05e-04)
<i>Mellivora capensis</i>	Carnivores	9.85	LC	3.97e-04 (\pm 2.73e-04)	0
<i>Lophocebus albigena</i>	Primates	7	VU	2.26e-04 (\pm 2.26e-04)	0
<i>Poiana richardsonii</i>	Carnivores	0.60	LC	1.88e-04 (\pm 1.41e-04)	0
<i>Tragelaphus spekii</i>	Even-toed ungulates	69	LC	1.57e-04 (\pm 1.57e-04)	0.001 (\pm 0.001)
<i>Tragelaphus eurycerus</i>	Even-toed ungulates	275.75	NT	1.25e-04 (\pm 1.25e-04)	0
<i>Dendrohyrax dorsalis</i>	Hyracoidea*	3.15	LC	1.18e-04 (\pm 7.81e-05)	0
<i>Cercopithecus cephus</i>	Primates	3.35	LC	8.96e-05 (\pm 6.14e-05)	7.81e-04 (\pm 2.91e-04)
<i>Arctocebus aureus</i>	Primates	0.235	LC	7.89e-05 (\pm 5.24e-05)	9.65e-05 (\pm 9.65e-05)
<i>Aonyx congicus</i>	Carnivores	20	NT	5.64e-05 (\pm 5.64e-05)	0
<i>Thryonomys swinderianus</i>	Rodents	4.35	LC	3.14e-05 (\pm 3.14e-05)	5.49e-05 (\pm 5.49e-05)
<i>Hylochoerus meinertzhageni</i>	Even-toed ungulates	178.75	LC	0	2.54e-04 (\pm 2.24e-04)
<i>Galagoides thomasi</i>	Primates	0.10	LC	0	1.15e-04 (\pm 7.59e-05)
<i>Perodicticus potto</i>	Primates	1.2	NT	0	8.23e-05 (\pm 8.23e-05)
<i>Sciurocheirus gabonensis</i>	Primates	0.26	LC	0	4.82e-05 (\pm 4.82e-05)
<i>Cercopithecus pogonias</i>	Primates	3.53	NT	0	2.74e-05 (\pm 2.74e-05)
<i>Colobus guereza</i>	Primates	9.28	LC	0	2.74e-05 (\pm 2.74e-05)
<i>Colobus satanas</i>	Primates	9.9	VU	0	2.74e-05 (\pm 2.74e-05)

Encounter rates (observations per camera-trap day) of observed mammals in FSC-certified (n=7) and non-FSC concessions (n=7), ranked in descending order of encounter rate in FSC-certified concessions. Per certification type the highest encounter rate of a species is depicted in bold. Body mass (categorized in five classes: <2kg, 2-10kg, 10-30kg, 30-100kg, >100kg) was retrieved from Kingdon (2015). IUCN Red List category was retrieved from the IUCN Red List⁶³. IUCN abbreviations: CR = Critically Endangered, EN = Endangered, VU = Vulnerable, NT = Near Threatened, LC = Least Concern. * = Have less than 10 observations and are therefore not included as separate taxonomic groups in the taxonomy analysis.

Article

Extended Data Table 3 | Linear Mixed Model Type III analysis of variance tables with Satterthwaite's method

	Fixed effects	Mean Square	Numerator Degrees of freedom	Denominator Degrees of Freedom	F value	P value (>F)
Total encounter rate	FSC certification	0.729	1	12.049	6.7787	0.02301 *
Body mass classes	FSC certification	37.200	1	11.12	35.796	8.758e-05 ***
	Body mass class	82.112	4	6.20	79.014	1.938e-05 ***
	FSC certification: Body mass class	46.339	4	1754.5	44.590	< 2.2e-16 ***
IUCN Red List categories	FSC certification	28.776	1	11.39	39.100	5.349e-05 ***
	IUCN Red List category	200.304	4	6.08	272.169	5.609e-07 ***
	FSC certification: IUCN Red List category	14.541	4	1753.46	19.759	6.344e-16 ***
Taxonomic groups	FSC certification	13.720	1	11.39	15.646	0.002107 **
	Taxonomic group	419.550	5	7.02	478.351	1.002e-08 ***
	FSC certification: Taxonomic group	23.420	5	2197.75	26.699	2.2e-16 ***

Each model included the concessions, concession pairs and cameras as random effects. ***: $p < 0.001$, **: $p < 0.01$, * $p < 0.05$.

Extended Data Table 4 | Pairwise comparisons and descriptive statistics of mammal encounter rates in paired FSC-certified (n=7) and non-FSC concessions (n=7)

Grouping variable and statistical test	Grouping classes (Numbers between brackets indicate the number of species per class)	Test statistic and multivariate-t adjusted p-values	FSC estimated mean encounter rate and confidence limits	Non-FSC estimated mean encounter rate and confidence limits
Body mass, pairwise comparisons	>100 kg (5) ***	p < 0.001	0.046 (0.035-0.060)	0.017 (0.013-0.022)
	30-100 kg (7) ***	p < 0.001	0.070 (0.050-0.100)	0.028 (0.020-0.039)
	10-30 kg (11) ***	p < 0.001	0.338 (0.200-0.571)	0.096 (0.057-0.163)
	2-10 kg (20)	p = 0.743	0.235 (0.160-0.345)	0.247 (0.169-0.362)
	<2 kg (13)	p = 0.995	0.215 (0.150-0.318)	0.247 (0.173-0.355)
IUCN Red List categories, pairwise comparisons	Critically Endangered (CR) (2) ***	p < 0.001	0.045 (0.034-0.059)	0.017 (0.013-0.022)
	Endangered (EN) (4)	p = 0.194	0.024 (0.019-0.030)	0.019 (0.015-0.024)
	Vulnerable (VU) (6)	p = 0.178	0.026 (0.016-0.041)	0.020 (0.013-0.032)
	Near Threatened (NT) (10) ***	p < 0.001	0.071 (0.043-0.116)	0.031 (0.019-0.050)
	Least Concern (LC) (34) *	p = 0.036	0.993 (0.077-1.28)	0.712 (0.552-0.918)
Taxonomy, pairwise comparisons	Elephants (1) ***	p < 0.001	0.038 (0.030-0.047)	0.015 (0.012-0.018)
	Primates (17) **	p = 0.002	0.048 (0.035-0.065)	0.027 (0.020-0.037)
	Even-toed Ungulates (14) ***	p < 0.001	0.564 (0.410-0.776)	0.278 (0.202-0.383)
	Carnivores (12) *	p = 0.027	0.067 (0.046-0.098)	0.045 (0.031-0.066)
	Pangolins (3)	p = 0.908	0.014 (0.011-0.018)	0.016 (0.012-0.020)
	Rodents (6)	p = 0.336	0.244 (0.184-0.325)	0.305 (0.229-0.407)

Pairwise comparisons were multivariate t adjusted. ***: p < 0.001, **: p < 0.01, * p < 0.05.

Article

Extended Data Table 5 | Hunting signs, geographic covariates and camera trap site covariates in FSC-certified (n=7) and non-FSC concessions (n=7)

Covariate	Categories	Test statistic and uncorrected p-values	FSC medians and interquartile range	Non-FSC medians and interquartile range
Hunting signs (in proportions)	-	V = 26, p = 0.036	0 (0.045)	0.139 (0.245)
Distance to roads (m)	-	V = 9, p = 0.469	4063 (4587)	7336 (3558)
Distance to rivers (m)	-	V = 17, p = 0.688	4259 (6998)	5355 (2813)
Distance to human settlements (m)	-	V = 13, p = 0.938	8304 (12436)	12334 (3395)
Distance to protected areas (m)	-	V = 17, p = 0.688	57372 (30014)	37341 (33290)
Elevation (m)	-	V = 12, p = 0.81	474 (122)	380 (235)
The presence of trails or paths (in proportions)	Elephant path	V = 28, p = 0.016	0.361 (0.296)	0.115 (0.063)
	Skidder trail	V = 12, p = 0.833	0.083 (0.096)	0 (0.152)
	Small wildlife trail	V = 4, p = 0.109	0.353 (0.498)	0.667 (0.109)
	Absence of trails	V = 8, p = 0.675	0.028 (0.090)	0.077 (0.136)
Forest visibility (in proportions)	0-10 m	V = 9, p = 0.469	0.793 (0.278)	0.889 (0.298)
	11-20 m	V = 20, p = 0.375	0.207 (0.264)	0.074 (0.205)
	>20m	V = 1, p = 0.414	0 (0.014)	0 (0.097)
Camera trap site slope (in proportions)	0-5°	V = 15, p = 0.402	0.833 (0.2)	0.722 (0.306)
	5-20°	V = 4, p = 0.208	0.167 (0.2)	0.278 (0.278)
	>20°	V = 1, p = 1	0	0
Presence of fruiting trees within 30 m (in proportions)	-	V = 13.5, p = 1	0.361 (0.307)	0.306 (0.382)
Presence of small water courses within 50 m (in proportions)	-	V = 3, p = 0.142	0.361 (0.256)	0.417 (0.318)

Two-sided Wilcoxon signed-rank, Bold: $p < 0.05$, Underscore: $p < 0.1$.

Reporting Summary

Nature Portfolio wishes to improve the reproducibility of the work that we publish. This form provides structure for consistency and transparency in reporting. For further information on Nature Portfolio policies, see our [Editorial Policies](#) and the [Editorial Policy Checklist](#).

Statistics

For all statistical analyses, confirm that the following items are present in the figure legend, table legend, main text, or Methods section.

n/a Confirmed

- The exact sample size (n) for each experimental group/condition, given as a discrete number and unit of measurement
- A statement on whether measurements were taken from distinct samples or whether the same sample was measured repeatedly
- The statistical test(s) used AND whether they are one- or two-sided
Only common tests should be described solely by name; describe more complex techniques in the Methods section.
- A description of all covariates tested
- A description of any assumptions or corrections, such as tests of normality and adjustment for multiple comparisons
- A full description of the statistical parameters including central tendency (e.g. means) or other basic estimates (e.g. regression coefficient) AND variation (e.g. standard deviation) or associated estimates of uncertainty (e.g. confidence intervals)
- For null hypothesis testing, the test statistic (e.g. F , t , r) with confidence intervals, effect sizes, degrees of freedom and P value noted
Give P values as exact values whenever suitable.
- For Bayesian analysis, information on the choice of priors and Markov chain Monte Carlo settings
- For hierarchical and complex designs, identification of the appropriate level for tests and full reporting of outcomes
- Estimates of effect sizes (e.g. Cohen's d , Pearson's r), indicating how they were calculated

Our web collection on [statistics for biologists](#) contains articles on many of the points above.

Software and code

Policy information about [availability of computer code](#)

Data collection

Data analysis

For manuscripts utilizing custom algorithms or software that are central to the research but not yet described in published literature, software must be made available to editors and reviewers. We strongly encourage code deposition in a community repository (e.g. GitHub). See the Nature Portfolio [guidelines for submitting code & software](#) for further information.

Data

Policy information about [availability of data](#)

All manuscripts must include a [data availability statement](#). This statement should provide the following information, where applicable:

- Accession codes, unique identifiers, or web links for publicly available datasets
- A description of any restrictions on data availability
- For clinical datasets or third party data, please ensure that the statement adheres to our [policy](#)

Research involving human participants, their data, or biological material

Policy information about studies with [human participants or human data](#). See also policy information about [sex, gender \(identity/presentation\), and sexual orientation](#) and [race, ethnicity and racism](#).

Reporting on sex and gender	N/A
Reporting on race, ethnicity, or other socially relevant groupings	N/A
Population characteristics	N/A
Recruitment	N/A
Ethics oversight	N/A

Note that full information on the approval of the study protocol must also be provided in the manuscript.

Field-specific reporting

Please select the one below that is the best fit for your research. If you are not sure, read the appropriate sections before making your selection.

Life sciences Behavioural & social sciences Ecological, evolutionary & environmental sciences

For a reference copy of the document with all sections, see nature.com/documents/nr-reporting-summary-flat.pdf

Ecological, evolutionary & environmental sciences study design

All studies must disclose on these points even when the disclosure is negative.

Study description	We used camera traps to assess whether FSC certification can mitigate the negative effects of timber extraction on wildlife by studying the encounter rate of a broad range of mammal species across multiple sites.
Research sample	We compared small to large-sized mammal observations across seven paired FSC-certified and non-FSC concessions in Gabon and the Republic of Congo. Gabon and the Republic of Congo lie within Western Equatorial Africa (WEA), and we included all companies that were FSC-certified between 2018 and 2021 in this region, with the exception of one which refused to allow access. WEA is particularly suitable for these analyses, as its forests are reasonably intact and logging concessions are embedded in a matrix of contiguous forest, which are therefore mostly devoid of influences other than the effects of logging and hunting. Wild meat hunting is pervasive in WEA. Logging increases hunting pressure by increased access (logging roads) and by the arrival of people working in the concessions in once-remote forests. By ensuring close spatial pairing of the FSC-certified and non-FSC concessions we reduced the influence of regional landscape heterogeneity.
Sampling strategy	We set up arrays of camera traps from 2018 to 2021 in 14 logging concessions owned by 11 different companies (5 FSC and 6 non-FSC) in Gabon and the Republic of Congo. We included all companies that were FSC-certified between 2018 and 2021 in this region, with the exception of one which refused to allow access. Seven FSC-certified concessions were each paired to the closest non-FSC concession that was similar in terms of terrain and forest type. All concessions are situated in a matrix of connected forests. Within each pair of concessions, camera traps (Bushnell Trophy Cam HD for pairs 1 - 6 and Browning 2018 Spec Ops Advantage for pair 7) were deployed simultaneously to account for seasonal differences, for two to three months. There was one exception where Covid restrictions obliged the cameras to remain in place for longer. Camera trap grid locations within each pair of concessions were chosen based on similarity between potential drivers of mammal abundance, including distance to settlements, roads, rivers, protected areas, elevation and time since logging (2-10 years before our study), although some camera grids overlapped older logging blocks.
Data collection	Camera traps were set out in systematic, one-kilometre spaced grids with a random start point. Upon reaching the predetermined GPS locations, the first potential installation location was used where cameras had at least 4 metres of visibility. This ensured that each grid was representative of environmental heterogeneity: i.e. not specifically targeting nor ignoring trails or other landscape elements that could influence detection. The one-kilometre inter-camera distance exceeds most species' home range sizes to avoid spatial autocorrelation. Neither were species expected to migrate within the sampling duration of the study. Between 28 to 36 cameras were deployed in each concession, totalling up to 474 camera traps, distributed over 474 km ² . Cameras were installed at a height of 30 cm to enable observations of mammals of all sizes while ensuring that each camera had at least four metres visibility in front of it. Cameras were programmed to take bursts of three photos to maximize the chance of detection and to take a photo every 12 hours for correct calculation of active days in the event of a defect before the end of the deployment period. For each camera, we recorded whether there was an elephant path skidder trail, small wildlife trail, or none of the above within each camera's field of view. We also visually estimated forest visibility (0-10m / 11-20m / >20m), slope (0-5° / 5-20° / >20°), presence of fruiting trees within 30 m and presence of small water courses within 50 m. When approaching each predefined camera point, we counted cartridges, snares and hunting camps from 500 m before the camera up to its location. Various field teams were employed in different sites and hence there may be some influence interobserver bias of hunting observations between sites.
Timing and spatial scale	We set up arrays of camera traps from 2018 to 2021. Camera traps were deployed simultaneously to account for seasonal

Timing and spatial scale	differences, for two to three months. There was one exception where Covid restrictions obliged the cameras to remain in place for longer.
Data exclusions	No data was excluded from the analysis.
Reproducibility	All camera trap data is available and can be reanalyzed to ensure the reproducibility.
Randomization	Camera trap grid locations within each pair of concessions were chosen based on similarity between potential drivers of mammal abundance, including distance to settlements, roads, rivers, protected areas, elevation and time since logging (2-10 years before our study), although some camera grids overlapped older logging blocks. Camera traps were set out in systematic, one-kilometre spaced grids with a random start point. Upon reaching the predetermined GPS locations, the first potential installation location was used where cameras had at least 4 metres of visibility. This ensured that each grid was representative of environmental heterogeneity: i.e. not specifically targeting nor ignoring trails or other landscape elements that could influence detection. The one-kilometre inter-camera distance exceeds most species' home range sizes to avoid spatial autocorrelation. Neither were species expected to migrate within the sampling duration of the study. Between 28 to 36 cameras were deployed in each concession, totalling up to 474 camera traps, distributed over 474 km ² . Cameras were installed at a height of 30 cm to enable observations of mammals of all sizes while ensuring that each camera had at least four metres visibility in front of it. Cameras were programmed to take bursts of three photos to maximize the chance of detection and to take a photo every 12 hours for correct calculation of active days in the event of a defect before the end of the deployment period. For each camera, we recorded whether there was an elephant path skidder trail, small wildlife trail, or none of the above within each camera's field of view. We also visually estimated forest visibility (0-10m / 11-20m / >20m), slope (0-5° / 5-20° / >20°), presence of fruiting trees within 30 m and presence of small water courses within 50 m. When approaching each predefined camera point, we counted cartridges, snares and hunting camps from 500 m before the camera up to its location. Various field teams were employed in different sites and hence there may be some influence interobserver bias of hunting observations between sites.
Blinding	Blinding was not relevant for our study as all mammal observations are linked to locations.
Did the study involve field work?	<input checked="" type="checkbox"/> Yes <input type="checkbox"/> No

Field work, collection and transport

Field conditions	Within each pair of concessions, camera traps (Bushnell Trophy Cam HD for pairs 1 - 6 and Browning 2018 Spec Ops Advantage for pair 7) were deployed simultaneously to account for seasonal differences, for two to three months. There was one exception where Covid restrictions obliged the cameras to remain in place for longer. Camera trap grid locations within each pair of concessions were chosen based on similarity between potential drivers of mammal abundance, including distance to settlements, roads, rivers, protected areas, elevation and time since logging (2-10 years before our study), although some camera grids overlapped older logging blocks.
Location	We set up arrays of camera traps from 2018 to 2021 in 14 logging concessions owned by 11 different companies (5 FSC and 6 non-FSC) in Gabon and the Republic of Congo.
Access & import/export	We gained permission from all participating logging companies to access their concessions.
Disturbance	Paths were made in the forest to be able to install the camera traps. Tropical forests are highly resilient such small disturbances as plants regrow quickly.

Reporting for specific materials, systems and methods

We require information from authors about some types of materials, experimental systems and methods used in many studies. Here, indicate whether each material, system or method listed is relevant to your study. If you are not sure if a list item applies to your research, read the appropriate section before selecting a response.

Materials & experimental systems

n/a	Involvement in the study
<input checked="" type="checkbox"/>	<input type="checkbox"/> Antibodies
<input checked="" type="checkbox"/>	<input type="checkbox"/> Eukaryotic cell lines
<input checked="" type="checkbox"/>	<input type="checkbox"/> Palaeontology and archaeology
<input type="checkbox"/>	<input checked="" type="checkbox"/> Animals and other organisms
<input checked="" type="checkbox"/>	<input type="checkbox"/> Clinical data
<input checked="" type="checkbox"/>	<input type="checkbox"/> Dual use research of concern
<input checked="" type="checkbox"/>	<input type="checkbox"/> Plants

Methods

n/a	Involvement in the study
<input checked="" type="checkbox"/>	<input type="checkbox"/> ChIP-seq
<input checked="" type="checkbox"/>	<input type="checkbox"/> Flow cytometry
<input checked="" type="checkbox"/>	<input type="checkbox"/> MRI-based neuroimaging

Animals and other research organisms

Policy information about [studies involving animals](#); [ARRIVE guidelines](#) recommended for reporting animal research, and [Sex and Gender in Research](#)

Laboratory animals

The study did not involve laboratory animals.

Wild animals

We confirm that no wild animals were harmed in any way as animals were only observed using camera traps.

Reporting on sex

The study did not involve sex-based data or analysis.

Field-collected samples

The study did not involve samples collected from the field.

Ethics oversight

No ethical approval or guidance was required because animals were only remotely observed using camera traps.

Note that full information on the approval of the study protocol must also be provided in the manuscript.