



# Lactic Acid-Proline Solvent Pretreatment of CS: Effects of Process Variables on Glucan, Xylan, and Lignin Composition

Onyelucheya, C. M. <sup>a\*</sup> and Nwabanne, J. T. <sup>b</sup>

<sup>a</sup> Department of Chemical Engineering, Federal University of Technology, Owerri, Imo State, P.M.B. 1526, Nigeria.

<sup>b</sup> Department of Chemical Engineering, Nnamdi Azikiwe University, Awka, Nigeria.

## Authors' contributions

This work was carried out in collaboration between both authors. Both authors read and approved the final manuscript.

## Article Information

DOI: 10.9734/AJOCS/2023/v13i6272

## Open Peer Review History:

This journal follows the Advanced Open Peer Review policy. Identity of the Reviewers, Editor(s) and additional Reviewers, peer review comments, different versions of the manuscript, comments of the editors, etc are available here: <https://www.sdiarticle5.com/review-history/109291>

Original Research Article

Received: 24/09/2023

Accepted: 26/11/2023

Published: 02/12/2023

## ABSTRACT

The aim of this study is to investigate the effect of temperature, duration, and water dilution on the composition of glucan, xylan, and lignin in cowpea shells (CS) pretreated with a neat and diluted Lactic acid-proline solvent. The composition of glucan, xylan, and lignin was analyzed using the NREL method. The highest xylan removal (12%) was achieved after a 6-hour pretreatment at 150°C, while 11.35% lignin removal was observed after 5 hours at the same temperature. The most significant increase in glucan content, reaching 78.3 %, was observed after 4 hours at 150°C using a 2.5% (w/w) water-diluted solvent. Comparing the effect of the neat solvents and diluted solvents it can be concluded that while the neat solvent promoted the dissolution of xylan and lignin, the addition of water preserved glucan from the harshness of the pretreatment. Therefore, the decision to dilute a natural deep eutectic solvent before its application in biomass pretreatment depends on

\*Corresponding author: E-mail: [chioma.onyelucheya@futo.edu.ng](mailto:chioma.onyelucheya@futo.edu.ng);

the desired product from biomass fractionation (lignin or a carbohydrate-rich material) and pretreatment temperature. These findings provide a foundation for further investigations into optimizing the entire process.

**Keywords:** Pretreatment; CS; natural deep eutectic solvent; biomass; lactic acid; proline.

## 1. INTRODUCTION

As the global human population continues to grow, there is a concurrent increase in the volume of waste generated by agricultural activities and food processing. According to a research by the United Nations Environmental Programme on waste conversion, it was estimated that about 140 billion metric tons of agro-waste (biomass) is generated globally on yearly basis [1]. And these wastes are disposed primarily through open-air burning and open-field dumping [2]. This practice raises serious environmental and human health concerns, necessitating the exploration of sustainable management strategies. Many agricultural and post-harvest wastes are rich in polysaccharides, particularly cellulose and hemicellulose, making them promising for conversion into valuable products [3]. To overcome the inherent recalcitrance nature of lignocellulosic biomass, and to achieve an effective biochemical and thermochemical conversion [4]. Pretreatment stands as an important initial step that aids structural modifications in the biomass.

But for sustainability in biomass conversion, it is highly recommended to adopt pretreatment methods that do not threaten the environment and one such approach is the use of Natural deep eutectic solvents (NADES). These solvents are made from substances found in plant cells as found by Choi et al. [5]. NADESs are classified as green solvents [6] and offer many advantages such as minimal toxicity, biodegradability, sustainability, affordability, and straightforward preparation procedure [7]. NADESs are also easily produced by combining hydrogen bond donors (such as lactic acid, malic acid, and oxalic acid) and hydrogen bond acceptors (such as glycine, choline chloride, proline, alanine, and betaine) commonly found in plants in specific molar ratios.

These solvents have been studied as a chemical route for the pretreatment of different biomass because of their high solubilisation power and tunability [8]. Previous reports have been published on the use of NADES for the pretreatment of agricultural waste such as rice straw [9], corn cob [10], oil palm empty fruit

bunch [11], poplar sawdust [12], Eucalyptus waste [13], chestnut [14]. Li et al. [9] investigated the pretreatment of rice straw using a deep eutectic solvent composed of 90% lactic acid and choline chloride (LC) with a 10% water dilution. The pretreatment, conducted at 120°C for 3 hours using LC in a 5:1 ratio, resulted in the removal of 58% xylan and 48% lignin, accompanied by a 73% increase in glucan. Another study by Kumar et al, [15] on rice straw pretreatment using choline chloride - lactic acid - water (1: 1:2.5) molar ratio at 121 ° C for 1 hour resulted in cellulose increment of 63 %, hemicellulose and lignin removal of 75 % and 37 % respectively. Su et al. [12] explored the effect of deep eutectic solvent pretreatment on the glucan, xylan, and lignin composition of poplar sawdust. In their study, the lactic acid-choline chloride solvent, with a ratio of 10:1, achieved 76% removal of xylan and 89% removal of lignin. This resulted in a 64% increase in glucan content of the pretreated sample after 90 minutes at 130 ° C.

In this study, a natural deep eutectic solvent produced by combining a hydrogen bond donor (lactic acid) and a hydrogen bond acceptor (proline) was used to fractionate CS. Lactic acid is an organic acid commonly found in sour milk and is classified as a generally safe chemical [16] while Proline is an amino acid found in plants, and it is vital for primary metabolism [17]. These chemicals naturally found in our environment were used for the pretreatment of cowpea shells. Cowpea is one of the major sources of plant protein. According to FAO [18], 8.9 million tonnes of cowpeas were produced globally in 2020, of which Africa accounts for 97 %. Nigeria and the Republic of the Niger as the highest producers: 42 % and 31 %, respectively. Cowpea (*Vigna unguiculata*) shells a post-harvest waste generated during the deshelling of cowpea pod. A study by Kemausuor et al [19] showed that CS residue has the potential of generating 17 Mega Liters of cellulosic ethanol per year. A study by Jekayinfa et al. [20] estimated that  $5285 \times 10^3$  tonnes of CS are generated yearly in Nigeria, therefore these underutilized biomass can serve as feedstock for biorefineries.

In biorefinery factors such as temperature, time, and water dilution have been established as some of the factors that affect the use of NADES [21]. Addition of water to solvents are done for several reasons which includes to reduce viscosity [22], to inhibit the solubility of cellulose. [23] and to reduce the volume of solvent used in a process [21]. The main objective of this research is to study the effect of temperature, time and water dilution variations on the glucan, xylan and lignin composition of CS pretreated using Lactic acid-proline solvent, and to the best of the best of our knowledge this area of research has not been explored.

## 2. MATERIALS

The cowpea (*Vigna unguiculata*) shells were locally sourced from in Chanchaga Local Government Area, Minna, Niger State, Nigeria. Lactic acid (90 %) was purchased from Thermo Scientific (USA). Proline (99 %), Sulphuric acid (98 %), D- (+)-glucose and D- (+) -xylose were purchased from Sigma Aldrich Company Ltd, Germany. These chemicals were utilized without any purification process.

## 3. METHODS

### 3.1 Sample and NADES Preparation

The substrate was washed with deionised water and sundried for two days before ball milling with a Retsch PM 100 Planetary ball mill (Haan, Germany) and afterwards sieved with a 425  $\mu\text{m}$  laboratory test sieve before using a Soxhlet extractor and ethanol to remove extractives for 6 h, after which the substrate was air-dried and stored in sealed containers for subsequent use.

Lactic acid (L) and Proline (P) were combined in a molar ratio of 4: 1 based on the findings of Francisco et al [24] stating that this molar ratio formed a clear liquid when combined and remained stable. Lactic acid-proline solvent was prepared based on the protocol described by Dai et al [25]. Briefly, the reagents were measured and added to a tightly capped bottle, followed by incubation in a water bath set at 50 ° C with continuous stirring at 150 rpm for 50 minutes.

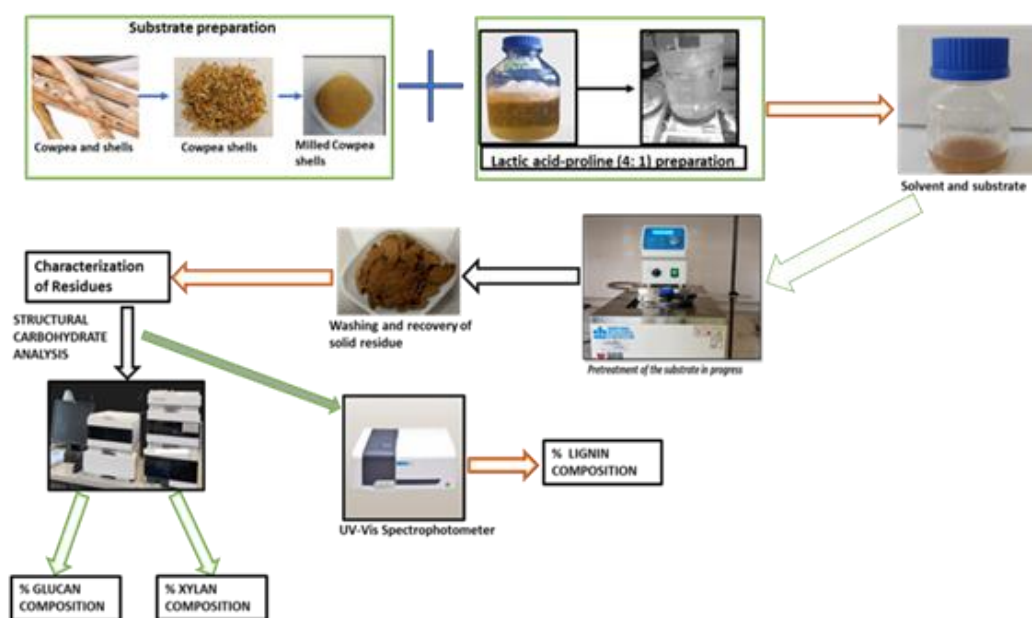
### 3.2 NADES Pretreatment

Pretreatment was carried out at 130 °C, 140 °C and 150 °C. The temperature range were selected based initial studies and research findings of Kumar et al. [26] and Procentese &

Rehmann [27]. The pretreatment time was varied as follows (2 h, 3 h, 4 h, 5 h and 6 h) using neat solvent and water-diluted solvents. Based on the research findings of these authors, Kumar et al. [15], Hou, Feng, Ye, Huang, & Zhang [28] and Kumar et al. [29], water dilutions varied between 2.5 % (w/w) and 5 % (w/w). Pretreatment was carried out with a solid load of 5 % (w/w), determined by Kumar et al. [29] in a capped Schott bottle placed in a high-temperature bath circulator (Daihan Scientific, Korea). Solid was recovered from the slurry by first washing with water only and afterwards with 5 ml of an anti-solvent (ethanol) before finally rinsing with deionized water. This procedure was adopted from the reported by Procentese et al. [30] and Li et al. [9]. For sustainability in the pretreatment process ethanol used for washing was recovered using a Vacuum rotavapor (Büchi Labortechnik, Switzerland) and reused during the entire process. The solid residue recovered was oven dried at 35 ° C as recommended by the National Renewable Energy Laboratory (NREL) [31]. The NREL method was used for the structural carbohydrate characterization (glucan and xylan) and lignin composition. All experiments were carried out in duplicates. The visual summary of the pretreatment process can be seen in Plate 1.

### 3.3 Characterization of Untreated and Pretreated CS

According to NREL method, 0.3 g of the substrates were mixed with 3 mL of 72% sulfuric acid and incubated for 1 hour at 30 ° C in a water bath. The acid concentration was then adjusted to 4% by adding 84 ml of deionized water, followed by autoclaving at 121 ° C and 1.3 bar for 1 hour using a Hirayama autoclave (HV-110, Japan). The resulting filtrate from the dilute acid hydrolysis was further diluted, and the pH was adjusted using calcium carbonate. Subsequently, the neutralized filtrates were filtered through 0.45  $\mu\text{m}$  nylon syringe filters and filled into HPLC autosampler vials. The composition of glucose and xylose was analysed using an Agilent 1260 Infinity HPLC system equipped with a refractive index detector. The analysis was carried out at 55 ° C, using an Aminex HPX-87C column (300 x 7.8 mm, Bio-Rad Laboratories, Hercules, California, USA) at 60 ° C. The column temperature was maintained at 60 °C, and the mobile phase consisted of 0.005 M H<sub>2</sub>SO<sub>4</sub> at a flow rate of 0.6 ml/min. Glucose and xylose values obtained were converted to the glucan and xylan equivalent using equations developed by NREL [31].



**Plate 1. Visual summary of the pretreatment process**

The acid-insoluble lignin (AIL) content was determined using the residue obtained from the acid hydrolysis step. The residue was placed in a crucible and dried at 105 ° C for 4 hours. Afterwards it was placed in a muffle furnace at 575 ° C for 4 hours. The weight loss of the acid-insoluble residue after ashing was measured gravimetrically to determine the acid-insoluble lignin content (AIL). The acid-soluble lignin (ASL) composition in the filtrates was evaluated using the Agilent Technologies Cary 60 UV-vis spectrophotometer at the absorbance wavelength of 288 nm. Based on the absorbance value obtained the acid-soluble lignin content was calculated using the equation developed by NREL [31]. The lignin content is determined by the sum of AIL and ASL, yielding the total lignin content.

## 4. RESULTS AND DISCUSSION

### 4.1 Effect of Water Dilution on the Composition of Pretreated CS

The chemical composition of the untreated cowpea shell was analyzed, showing glucan at 21.32 % ( $\pm 0.39$ ), xylan at 21.46 % ( $\pm 0.29$ ), and a total lignin content of 37%. The glucan and lignin composition is similar to coffee silverskin [27] and the biomass has been studied for pretreatment using deep eutectic solvent.

For effective conversion of CS, delignification of the sample and preservation of cellulose is

essential. However, it has been established that the high viscosity of natural deep eutectic solvents obstructs effective mass transfer thereby affecting their applications in the field of biomass pretreatment [21]. And application of high temperature pretreatment solubilizes cellulose [32]. Nevertheless, these challenges can be addressed by diluting the solvents with water.

Xylan and lignin removal of 5% and 28%, respectively, were achieved at 130°C with the neat solvent after 6 hours of pretreatment (refer to Fig. 1). The introduction of water dilutions at 2.5% and 5% (w/w) to the natural deep eutectic solvents (NADES) at 130°C did not result in improvements in delignification or xylan removal within the sample, consequently leading to a lower glucan yield. At 140°C (see Fig. 2), using the neat solvent resulted in higher xylan and lignin removal compared to the 2.5% and 5% (w/w) water dilution. However, a higher glucan content of 37.28 % was obtained at 2.5% water dilution after 5 hours of pretreatment, indicating the stability of glucan in the presence of water molecules at this temperature.

The highest xylan removal of 12 % was obtained with the neat solvent at 150 ° C after 6 hours. The xylan removal obtained in this study is lower than previous published data on deep eutectic solvents. Procentese & Rehmann [27] obtained 49 % xylan removal from coffee silverskin after 3 h at 150 ° C using choline chloride -glycerol

solvent. Another study by Su et al. [12] reported 76 % xylan removal from polar sawdust, using lactic acid-choline chloride (10: 1) at 130 °C for 90 mins. The result obtained in this work therefore shows xylan is relatively stable in lactic acid -proline solvents even at high temperature. From the results obtained (refer to Fig. 3), applying 2.5% water at 150°C after 4 hours preserved glucan to achieve a 38 % composition, while using the undiluted solvent resulted in 37 % glucan composition. Lignin removal was also highest (11.35 %) with the neat solvent at 150 ° C after 5 hours. The 2.5 and 5 % water diluted solvents did not improve delignification when compared to the neat solvents.

The trend of higher lignin and xylan removal with the undiluted solvent in comparison to diluted solvents, along with the preservation of glucan in the diluted solvent, was also documented by Kumar et al. [15]. In their study, rice straw was pretreated with both undiluted Lactic acid-choline chloride solvent mixed in the molar ratio (9: 1) and water-diluted solvent (9:1:2.5). The undiluted solvent achieved 93% removal of hemicellulose and 56% removal of lignin. In contrast, the diluted solvent showed slightly lower removal rates, with 75% hemicellulose and 37% lignin removal. The sample pretreated with the diluted solvent displayed the highest cellulose increment at 63%.

They attributed the reduced delignification when using diluted solvents to the decreased acidity resulting from the addition of water. This decrease in the delignification capacity of solvents due to water addition and a reduction in cellulose loss were also reported by Hou et al. [28]. Interestingly the reduced delignification capacity of diluted solvent was not the case in another study by New et. al [21]. In their study, addition of water to choline chloride-urea solvent improved delignification of oil palm fronds by 17.11 % after 4 hours of pretreatment at 120 ° C. therefore the impact of water addition on lignin removal from biomass is dependent on the type of solvent applied. The general pattern of improved glucan content observed at a 2.5% water dilution can be ascribed to the competitive hydrogen bonding of water molecules to cellulose fibers, thereby inhibiting the dissolution of glucan [23].

The pretreatment with neat solvent for the temperature and time range resulted to a lower solid recovery with the lowest 45 % obtained at 150 °C after 6 hours. Applying 2.5 and 5 % water dilution increased solid recovery for each

temperature studied and this is due to less acidity of the solvents hence lower solubilization of substrate.

From the results obtained, addition of water to solvents across the temperatures reduced acidity of the solvent hence reducing their capacity to remove lignin and xylan when compared to the neat solvent, however the water molecules preserved glucan dissolution at high temperatures.

#### 4.2 Effect of Temperature and Time Variation on the Composition of Pretreated CS

Increasing the pretreatment temperatures from 130 to 150 ° C and pretreatment time from 2 to 6 hours consistently resulted in increased removal of xylan. The removal of xylan and lignin generally resulted in low solid recovery as temperatures and pretreatment time increased.

It is noteworthy that there was a slight increase in lignin composition (0.32% to 0.8%) at 150 ° C for both neat and diluted solvents when the duration increased from 5 to 6 hours. This marginal increase can be attributed to the reabsorption and redeposition of lignin. According to a study by Chen et al. [33], the dissolved lignin in the bulk phase of a pretreatment medium at high temperatures and longer pretreatment times is redeposited on the biomass surface during the cooling down process.

In contrast, the glucan composition in the pretreated cowpea shell (CS) showed a significant increase as the temperature was raised from 130 to 150°C in comparison to the untreated substrate. At 130°C, an increase in glucan content, reaching 66%, was observed after 5 hours of treatment with a neat solvent. while, at 140°C and 150°C, the maximum increment in glucan content was achieved using 2.5 % water diluted solvent. A 75% increase was obtained after 5 hours at 140°C and 78.3% increase after 4 hours at 150°C.

However, once the maximum glucan composition was attained, further pretreatment led to a decline in glucan content. A similar result was reported by Yerizam et al. [34], in which coconut husk pretreated with betaine-lactic acid with molar ratios: 1: 4, 1: 6, 1:8 at 121 °C for 2, 4, 6, and 8 hours. The 1:4 and 1: 8 NADESs reached optimum cellulose yield after 4 hours before declining while 1:6 attained optimum after 6 hours.

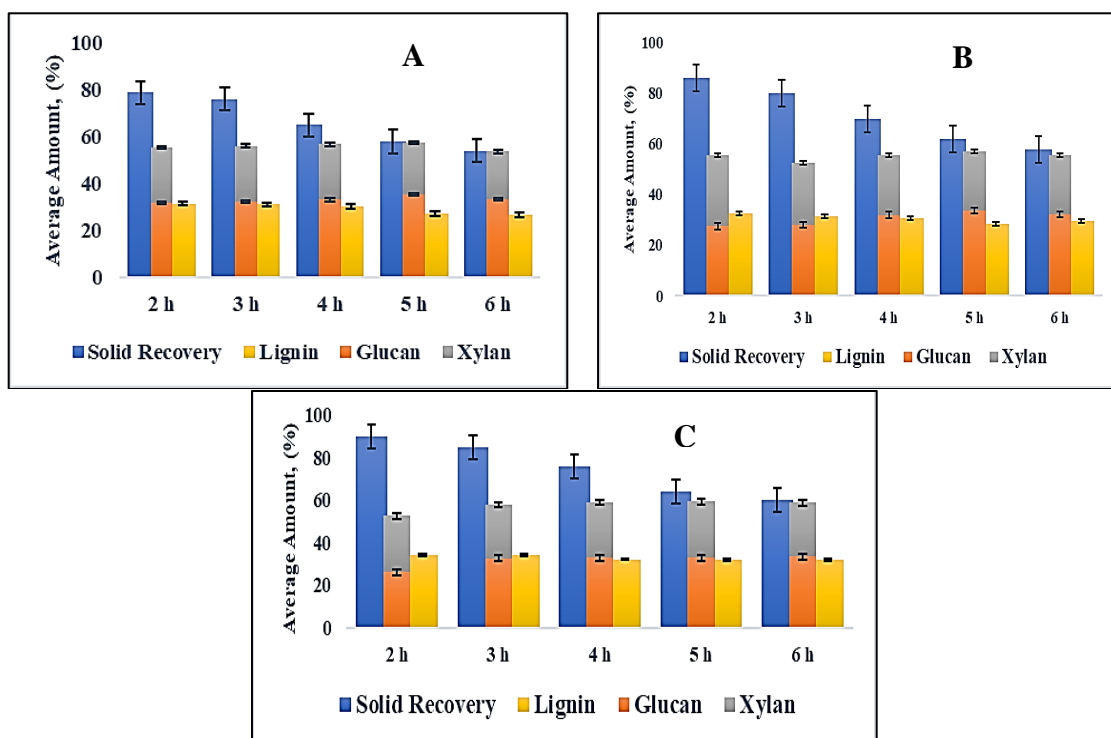


Fig. 1. Composition of CS pretreated with neat solvent (A), 2.5 % diluted-solvent (B) and 5 % diluted-solvent (C) at 130 ° C

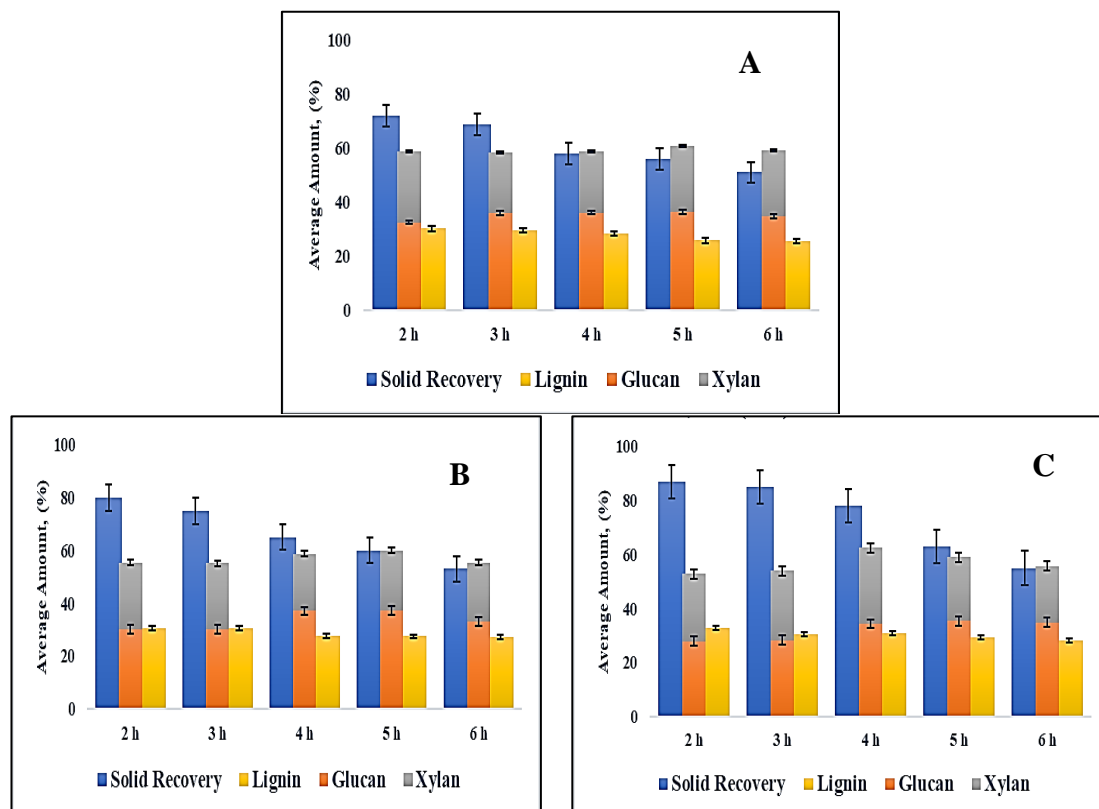
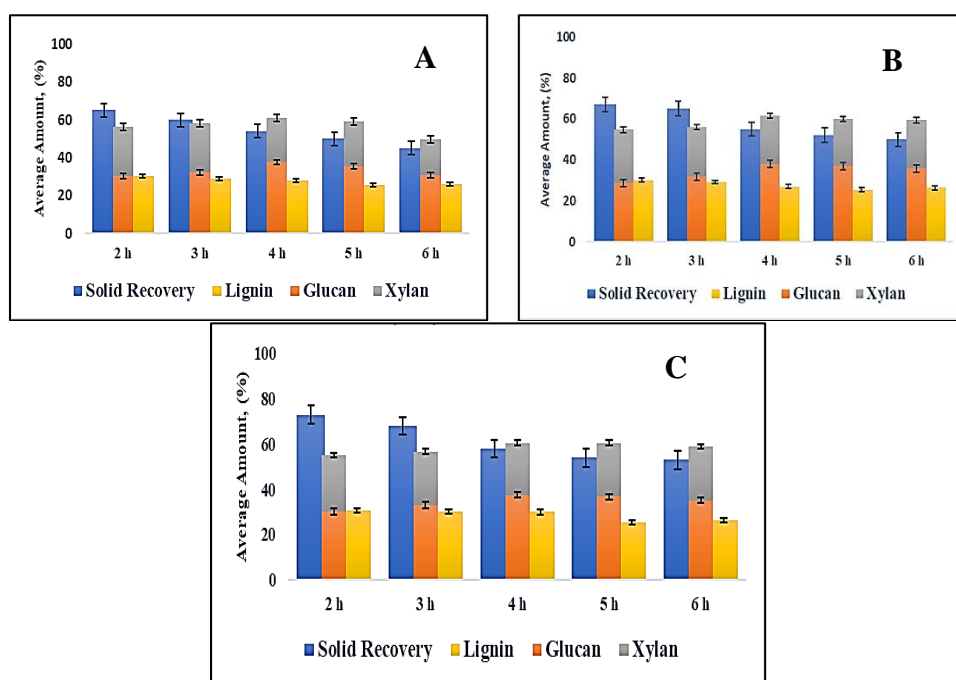


Fig. 2. Composition of CS pretreated with neat solvent (A), 2.5 % diluted-solvent (B) and 5 % diluted-solvent (C) at 140 ° C



**Fig. 3. Composition of CS pretreated with neat solvent (A), 2.5 % diluted-solvent (B) and 5 % diluted-solvent (C) at 150 ° C**

Higher pretreatment temperatures and time resulted to decline in solid yield and this is in line with previous reports by Su et al. [12], Procentese & Rehmann [27]. The research by Su et al. [12] using Choline chloride-lactic acid solvent at 1: 4 molar ratio in the pretreatment of poplar sawdust. At 110 °C, the solid recovery rate reached 87%, gradually decreasing to 57% as the temperature increased to 130 °C. In another study by Procentese & Rehmann [27] using choline-glycerol in a molar ratio of 1:2 for the pretreatment of coffee silverskin. With a temperature increase of 35 °C, there was a subsequent 15% reduction in the recovered solid fraction.

## 5. CONCLUSION

The investigation explored the impact of variations in temperature, time, and water dilution on the composition of CS after pretreatment with a Lactic acid-proline solvent. The percentages of glucan, xylan, and lignin were analyzed using the NREL protocol. The results obtained indicate that using pure solvents for pretreatment results in higher removal of lignin and xylan, accompanied by a decline in glucan as temperatures and time increase. Conversely, the use of diluted solvent reduces the removal of lignin and xylan but also diminishes the dissolution of glucan. The results revealed a significant increase in glucan content

(78.3 %), resulting in a carbohydrate-rich material. However, further research is necessary to determine the interactive effect of these variables on the glucan, xylan, and lignin composition of the CS.

## COMPETING INTERESTS

Authors have declared that no competing interests exist.

## REFERENCES

1. United Nations Environment Programme. Converting Waste Agricultural Biomass into a Resource Compendium of Technologies. 2009:1-441.
2. Babu S, Rathore SS, Singh R, Kumar S, Singh VK, Yadav S, et al. Exploring agricultural waste biomass for energy, food and feed production and pollution mitigation: A review. *Bioresource Technology*. 2022;127:566. DOI: 10.1016/j.biortech.2022.127566
3. Souza MAd, Vilas-Boas IT, Leite-da-Silva JM, Abrahão PdN, Teixeira-Costa BE, Veiga-Junior VF. Polysaccharides in agro-industrial biomass residues. *Polysaccharides*. 2022;3(1):95-120. DOI:https://doi.org/10.3390/polysaccharide\_s3010005

4. Anukam A, Berghel J. Biomass pretreatment and characterization: a review. *Biotechnological applications of biomass*. 2021:1-17.  
DOI: 10.5772/intechopen.93607
5. Choi YH, Van Spronsen J, Dai Y, Verberne M, Hollmann F, Arends IWCE, et al. Are Natural Deep Eutectic Solvents the Missing Link in Understanding Cellular Metabolism and Physiology? *Plant Physiology*. 2011;156(4):1701-5.  
DOI: 10.1104/pp.111.178426
6. Krisanti E, Terahadi F, Fauzia F, Putri S. Alcohol-based natural deep eutectic solvents (NADES) as green solvents for extraction of mangostins from *Garcinia mangostana* pericarp. *Planta Medica*. 2015;81(16):PW\_163.  
DOI:10.1055/s-0035-1565787
7. Owczarek K, Szczepanska N, Plotka-Wasyłka J, Rutkowska M, Shyshchak O, Bratychak M, et al. Natural deep eutectic solvents in extraction process. *Chemistry & Chemical Technology*. 2016;10(4):601-6.
8. Abbott AP, Harris RC, Ryder KS, D'Agostino C, Gladden LF, Mantle MD. Glycerol eutectics as sustainable solvent systems. *Green Chemistry*. 2011;13(1):82-90.  
DOI: <https://doi.org/10.1039/C0GC00395F>
9. Li A-L, Hou X-D, Lin K-P, Zhang X, Fu M-H. Rice straw pretreatment using deep eutectic solvents with different constituents molar ratios: Biomass fractionation, polysaccharides enzymatic digestion and solvent reuse. *Journal of Bioscience and Bioengineering*. 2018;126(3):346-54.  
DOI: 10.1016/j.jbiosc.2018.03.011
10. Zhang C-W, Xia S-Q, Ma P-S. Facile pretreatment of lignocellulosic biomass using deep eutectic solvents. *Bioresource technology*. 2016;219:1-5.  
DOI:<https://doi.org/10.1016/j.biortech.2016.07.026>
11. Thi S, Lee KM. Comparison of deep eutectic solvents (DES) on pretreatment of oil palm empty fruit bunch (OPEFB): Cellulose digestibility, structural and morphology changes. *Bioresource technology*. 2019;282:525-9.  
DOI: 10.1016/j.biortech.2019.03.065.
12. Su Y, Huang C, Lai C, Yong Q. Green solvent pretreatment for enhanced production of sugars and antioxidative lignin from poplar. *Bioresource Technology*. 2021;321:124471.  
DOI: 10.1016/j.biortech.2020.124471
13. Shen X-J, Wen J-L, Mei Q-Q, Chen X, Sun D, Yuan T-Q, et al. Facile fractionation of lignocelluloses by biomass-derived deep eutectic solvent (DES) pretreatment for cellulose enzymatic hydrolysis and lignin valorization. *Green Chemistry*. 2019;21(2):275-83.  
DOI:<https://doi.org/10.1039/C8GC03064B>
14. Husanu E, Mero A, Rivera JG, Mezzetta A, Ruiz JC, D'Andrea F, et al. Exploiting Deep Eutectic Solvents and Ionic Liquids for the Valorization of Chestnut Shell Waste. *ACS Sustainable Chemistry & Engineering*. 2020;8(50):18386-99.  
DOI: 10.1021/acssuschemeng.0c04945
15. Kumar AK, Shah E, Patel A, Sharma S, Dixit G. Physico-chemical characterization and evaluation of neat and aqueous mixtures of choline chloride+ lactic acid for lignocellulosic biomass fractionation, enzymatic hydrolysis and fermentation. *Journal of Molecular Liquids*. 2018; 271:540-9.  
DOI:<https://doi.org/10.1016/j.molliq.2018.09.032>
16. Abedi E, Hashemi S. Lactic acid production—producing microorganisms and substrates sources-state of art. *Heliyon* 2020;6(10):e04974.  
DOI: 10.1016/j.heliyon.2020.e04974.
17. Szabados L, Savouré A. Proline: a multifunctional amino acid. *Trends in plant science*. 2010;15(2):89-97.  
DOI: 10.1016/j.tplants.2009.11.009
18. FAO. Crops and livestock products 2021 [cited 2022 8, January]. Available:<https://www.fao.org/faostat/en/#data/QCL>.
19. Kemausuor F, Kamp A, Thomsen ST, Bensah EC, Østergård H. Assessment of biomass residue availability and bioenergy yields in Ghana. *Resources, Conservation and Recycling*. 2014;86:28-37.  
DOI: 10.1016/j.resconrec.2014.01.007
20. Jekayinfa SO, Orisaleye JI, Pecenka R. An Assessment of Potential Resources for Biomass Energy in Nigeria. *Resources*. 2020;9(8):92.  
DOI:<https://doi.org/10.3390/resources908092>
21. New EK, Wu TY, Lee CBTL, Poon ZY, Loow Y-L, Foo LYW, et al. Potential use of pure and diluted choline chloride-based deep eutectic solvent in delignification of oil palm fronds. *Process Safety and Environmental Protection*. 2019;123:190-8.  
DOI: 10.1016/j.psep.2018.11.015



22. Dai Y, Witkamp G-J, Verpoorte R, Choi YH. Tailoring properties of natural deep eutectic solvents with water to facilitate their applications. Food Chemistry. 2015; 187:14-9.  
DOI:https://doi.org/10.1016/j.foodchem.2015.03.123
23. Swatloski RP, Spear SK, Holbrey JD, Rogers RD. Dissolution of cellulose with ionic liquids. Journal of the American chemical society. 2002;124(18):4974-5.  
DOI:https://doi.org/10.1021/ja025790m
24. Francisco M, Van Den Bruinhorst A, Kroon MC. New natural and renewable low transition temperature mixtures (LTTMs): screening as solvents for lignocellulosic biomass processing. Green Chemistry. 2012;14(8):2153-7.  
DOI:https://doi.org/10.1039/C2GC35660K
25. Dai Y, Van Spronsen J, Witkamp G-J, Verpoorte R, Choi YH. Natural deep eutectic solvents as new potential media for green technology. Analytica Chimica Acta. 2013;766:61-8.  
DOI: 10.1016/j.aca.2012.12.019
26. Kumar N, Gautam R, Stallings JD, Coty GG, Lynam JG. Secondary agriculture residues pretreatment using deep eutectic solvents. Waste and Biomass Valorization. 2021;12:2259-69.  
DOI: 10.1007/s12649-020-01176-1
27. Procentese A, Rehmann L. Fermentable sugar production from a coffee processing by-product after deep eutectic solvent pretreatment. Bioresource Technology Reports. 2018;4:174-80.  
DOI:https://doi.org/10.1016/j.biteb.2018.10.012
28. Hou X-D, Feng G-J, Ye M, Huang C-M, Zhang Y. Significantly enhanced enzymatic hydrolysis of rice straw via a high-performance two-stage deep eutectic solvents synergistic pretreatment. Bioresource technology. 2017;238:139-46.  
DOI: 10.1016/j.biortech.2017.04.027
29. Kumar AK, Parikh BS, Pravakar M. Natural deep eutectic solvent mediated pretreatment of rice straw: bioanalytical characterization of lignin extract and enzymatic hydrolysis of pretreated biomass residue. Environmental Science and Pollution Research. 2016;23(10): 9265-75.  
DOI:https://doi.org/10.1007/s11356-015-4780-4
30. Procentese A, Johnson E, Orr V, Campanile AG, Wood JA, Marzocchella A, et al. Deep eutectic solvent pretreatment and subsequent saccharification of corncob. Bioresource technology. 2015; 192:31-6.  
DOI: 10.1016/j.biortech.2015.05.053
31. Sluiter A, Hames B, Ruiz R, Scarlata C, Sluiter J, Templeton D, et al. Determination of structural carbohydrates and lignin in biomass. Laboratory analytical procedure. 2008;1617(1):1-16.
32. Yu G, Li B, Liu C, Zhang Y, Wang H, Mu X. Fractionation of the main components of corn stover by formic acid and enzymatic saccharification of solid residue. Industrial crops and products. 2013;50:750-7.  
DOI: 10.1016/j.indcrop.2013.08.053
33. Chen H, Fu Y, Wang Z, Qin M. Degradation and redeposition of the chemical components of aspen wood during hot water extraction. BioResources. 2015;10(2):3005-16.  
DOI:10.15376/BIORES.10.2.3005-3016
34. Yerizam M, Jannah AM, Aprianti N, Yandriani Y, Rendana M, Ernas AQ, et al. Bioethanol production from coconut husk using DES-NADES pretreatment and enzymatic hydrolysis method. Comptes Rendus Chimie. 2023;26(S1):1-10.  
DOI: 10.5802/crchim.226

© 2023 Onyelucheya and Nwabanne; This is an Open Access article distributed under the terms of the Creative Commons Attribution License (<http://creativecommons.org/licenses/by/4.0>), which permits unrestricted use, distribution, and reproduction in any medium, provided the original work is properly cited.

*Peer-review history:*

*The peer review history for this paper can be accessed here:*

*<https://www.sdiarticle5.com/review-history/109291>*