



Complications of Kidney in Severe Malaria

Forman Erwin Siagian^{a*}

^a *Department of Parasitology and the Center of Biomedic Research, Faculty of Medicine, Universitas Kristen Indonesia, Jakarta, Indonesia.*

Author's contribution

All parts of this review prepared by author FES from designed the study, performed the statistical analysis, wrote the protocol and the first draft of the manuscript and also approved the final manuscript.

Article Information

DOI: 10.9734/AJRID/2022/v11i3218

Open Peer Review History:

This journal follows the Advanced Open Peer Review policy. Identity of the Reviewers, Editor(s) and additional Reviewers, peer review comments, different versions of the manuscript, comments of the editors, etc are available here: <https://www.sdiarticle5.com/review-history/93126>

Review Article

Received 17 August 2022
Accepted 21 October 2022
Published 25 October 2022

ABSTRACT

Malaria is an infectious protozoan parasitic disease transmitted by Anopheles spp mosquito. As a disease entity, malaria is still a major global health problem due to its morbidity and mortality that endangered millions of individuals inhabitants in tropical region. Kidney derangement is moderately frequent in severe malaria caused by the species *P. falciparum* and also *P. malariae*, but seldom this condition has also been reported in malaria due to *P. vivax*. Severe or complicated malaria can occur due to delay or failure of treatment. Making correct and early diagnosis is a prerequisite for successful treatment. Actually, a series of events that begins with the entry of blood protozoa into the host which then causes hemodynamic disturbances and loss of normal capillary capacity. Hemodynamic dysfunction, immune response and with addition from the consequences of severe malaria complications in other organs (e.g., liver) leading to worsening of kidney function in severe malaria. This paper cover the recent findings of kidney involvement in severe malaria and other important facts related to this issue.

Keywords: Infection; severity; complication; glomerulonephritis; capillary; hemodynamic.

1. INTRODUCTION

Malaria is a global blood protozoan based parasitic infection (*Plasmodium* spp) transmitted by specific mosquitos, *Anopheles* spp. Its

existence in the environment is related to the continuity of their breeding place and the guarantee of the existence of food sources [1,2]. Epidemiologically, malaria related morbidity and mortality are still high, especially among children

*Corresponding author: E-mail: forman.siagian@uki.ac.id;

and women living in endemic areas [3]. It affects +200 million people globally, with estimated number of mortality due to malaria and its complication reaching in up to 303,000 children annually. Although the low prevalence in tropical under-developed countries is common, maybe due to budget constraints [4,5] that caused underreported or undetected cases, but unfortunately for travelers or other visitors that came from low transmission regions to visit endemic regions, they are very prone to malaria, and its impediment; especially if they have returned to their area of origin/hometown where malaria may not be a type of disease that is commonly found locally [3,6].

Without early diagnosis and proper adequate antimalarial treatment, what was originally just a simple malaria can then progress to severe or complicated malaria in immune-naive people, e.g., children, by way of cytoadherence- an infected erythrocyte cellular architecture, conferring cytoadhesive properties to the infected erythrocytes [7,8]. Severe malaria able to cause noteworthy and simultant multi-organ dysfunction, e.g., kidney derangement [8]. Acute kidney injury (AKI) is the most prevalent form of severe malaria related kidney complication [9]. Common pathophysiological pathways include impaired microcirculation [10], due to sequestration of parasitized erythrocytes, systemic inflammatory responses, and in the end trigger endothelial activation [9].

The pathogenesis of AKI in severe malaria is not clearly revealed but suggested mechanisms include acute tubular necrosis (ATN) due to (1) encumbrance in renal microvasculature and its local circulation, (2) intra-renal infection-triggered proinflammatory effects, and (3) full blown metabolic disturbances [11]. Doctors must carefully consider the potency of malarial infection in AKI patient if the patient had a pilgrimage history to endemic region; in this scenario, an early clinical recognition and treatment are mandatory to prevent disease worsening and eventually improving outcomes [12]. This article will describe severe malaria-induced AKI in order to improve a better understanding of this infection's consequences on the kidneys.

2. MALARIA PATHOGENESIS

The infection starts when the infective stage named sporozoites are inserted by the aid of Infectious Anopheles mosquito in susceptible

individual [13,14]. After going through some periods of transformative cycle until the appearance of the schizonts in peripheral blood and followed by numbers of merozoites attack erythrocytes. The infected erythrocytes lost its deformability property that leads to the cell wall rupture, named hemolysis [15]. The mean incubation time is estimated, from the time the parasite enters the host until clear clinical symptoms appeared, for a period of 12 days for malaria due to *P. falciparum*, 14 days for malaria due to *P. vivax* and last but not least 30 days for malaria due to *P. malariae*.

Malaria itself, regardless of the causative species, is clinically divided into acute, fulminant or chronic, chronologically [16]. In general, infected individuals present with certain duration of intermittent fever, chills, headache, asthenia, anorexia, myalgia-arthralgia, nausea and vomiting [17]. According to Bria et al. [17], the previous symptoms combined with patients' history of malaria as a non symptom-related factor contribute most to correct malaria diagnosis. Diagnosis made microscopically by discovering intracellular parasite inside erythrocytes in stained thin blood films using Giemsa's while the thick blood smear is only to show the result is positive or negative [18,19].

The acute condition is occasionally caused by *P. vivax*, *P. ovale* and to some extent less frequent, by *P. Malariae* [18]. Patients regularly suffer from obvious paroxysm fever, with intervals ranging from 1 to 4 days, and usually always accompanied with frigidus/chills, sweating, anemia, hepatomegaly and splenomegaly. Fulminant malaria is classically believed caused by *P. Falciparum* [20], eventhough malaria caused by *P. vivax* was long considered to have a low mortality, but recent reports from certain geographical regions suggest that severe and complicated vivax malaria may be more frequent than previously known [21].

A number of symptoms are often found in clinical conditions of severe malaria, including: anemia, acute kidney injury, disseminated intravascular coagulation, respiratory failure, adynamia, severe diarrhea, prominent jaundice, hydroelectrolite disturbances, shock and ends in coma [20-22]. For someone who has actually recovered from malaria, a state of reactivation can occur in malaria due to *P. ovale* and *P. vivax*. Reactivation occured due to remaining hypnozoites the liver and manifest with reappearance of: high fever, anemia, hepato-

splenomegaly and malnutrition [23,24]. The chronic malaria is usually caused by *P. Malariae*, which is the most frequently related in glomerulonephritis *et causa malaria* [25], but the species *P. vivax*, notwithstanding being appraised as a "benign" organism, causing in insignificant mortality percentages, to some extent has also been involved in severe condition [21]. Kidney involvement and its derangements in *P. vivax* infections are related with the patient's age, microvasculature-hemodynamic derangement and if the condition worsens, then it can have caused fatal respiratory failure [20-22,25].

2.1 Histopathology of Affected Kidney: Involvement in Severe Malaria

Clinically, indications of kidney derangement in severe malaria are numerous, with the most often condition meet are as follows: moderate to severe proteinuria, microalbuminuria and urinary casts, proclaimed in >50% of patients [18]. Actually, the condition of nephrotic syndrome has also been delineated in malaria falciparum, but luckily it is seldom to happen [27]. In malaria due to *P. falciparum*, renal tubular disease actually exhibited by a well-established entity, the condition identified as hemoglobinuric nephrosis ("blackwater fever"); the happening of remarkable glomerular derangement is inconspicuous and is very likely to be missed by doctors for two reasons: (1) the kidney derangement signs and symptoms masked by the more severe symptoms that are more prominent, (2) cases like this are rarely encountered (for example in imported malaria conditions due to traveling to endemic areas).

Rather than the parasite burden itself, the delayed complications malaria-induced dysregulated immune responses that combined with the direct parasite-its products related tissue impairment can lead to a series of events as a consequence of the chronicity of the disease; without realizing it because the symptoms are not always clear, it can be irreversible and deteriorating [8,9,21,29]. Furthermore, the complete elimination of this protozoan parasites inside the host probably difficult due to the existence of liver stage, and the remaining often lead to incomplete recovery from the disease as silent complications that can still persist for a long time. After completed treatment with artemisinin derivatives, a number of asexual parasites set off inactive (*dormant*) for a short periode of time within their infected erythrocytes

[30]. Reactivation of *dormant* parasites can occur immediately after anti-malarial regimen concentrations decline [31].

In complicated malaria due to *P. falciparum*, actually it is a multiple-organ disease characterized by successive failure of vital organs with diverse conditions including sudden cerebral malaria, fatal severe anaemia, lactic-acidosis, hypoglycaemia, acute renal failure and massive pulmonary edema [32]. In the context of renal impairment due to malaria, the severity and progression of the disease course clearly show signs of clinical deterioration that tend to be fatal and potentially lethal.

Histopathologically, microscopic analysis of diseased kidney tissue in severe malaria revealed signs of: (1) glomerulonephritis, (2) acute tubular necrosis and (3) acute interstitial nephritis. It is also attainable for the patient to develop gradual chronic kidney disease due to malaria, chiefly in those individuals living in endemic areas which experience repetitive episodes of malaria [18]. Plasmodium antigens have already been noticed in the glomeruli, pointing a straight consequences of this blood protozoan in the functional units of the kidney, which can provoke sequence of inflammatory process that advancing to distinctive patterns of glomerulonephritis [32].

According to the result of *post-mortem* histopathology examination regarding specimens of renal tissue assembled from lethal cases of severe malaria due to *P. falciparum* (n=63) revealed that in many patients, actually several conditions of severe disease happened be in conformity almost at the same time, accentuating the characteristic of multi-organ involvement in severe malaria disease. Eventhough that the complications were unassociated to each other and were scattered independently among each patients, but still, unfortunately regardless of the severity of the condition of the affected organs, but all conditions lead to the fatality of patients who are not successfully treated, as soon as possible [32].

Qualitative observation of pathological appearances in the kidney tissues of patients who died due to severe malaria conducted with specific focus to the section of glomerular capillaries region, basement membranes areas, peritubular capillaries and blood vessels [32]. Representative picture of histopathology of glomeruli in the kidneys of the *P. falciparum*

malaria patients compared with the normal/control can be seen in comprehensive report conducted by Wichapoon et al. [33].

Within these specific kidney micro vasculature, close observation of the attributes and severity of kidney injury are carefully observed. Previously mentioned condition usually marked with histology changes regarding diseased kidney structure as follows:

- (1) the signs of presence or absence of intravascular sequestered parasitized red blood cells (PRBC),
- (2) number and type of non erythrocyte blood cells, e.g., leukocytes, fibrin thrombus and also platelets found on the spot,
- (3) Endothelial cells were examined carefully for the possibility of cell hypertrophy and or cell bulging, pseudopodia formation, changes in organelle shape and intercellular bridges, with also sign of vacuolation,
- (4) signs of glomerular basement membrane solidifying and the existence of any electron dense deposits inside the glomerular capillaries lumen, which correlate to immune complex deposition, either in the area of peripheral capillary loops or nearby mesangium,
- (5) The shape and appearance of glomerular epithelial cell foot processes was carefully examined to determine whether foot process fusion (effacement) was seen, which may indicate proteinuria.
- (6) Last but not least, the presence or absence of intra capillaries malarial haemorrhages was evaluated within the perivascular spaces and interstitium,
- (7) Sequestration index (in percent) counted by compared themagnitude of a sequestration in to the peripheral blood parasitaemia,

All of these changes lead to major circulatory disturbances in the renal microvasculature [34], which can be fatal if not treated immediately, and the consequences are listed below.

2.2 Impediments in Renal Microvasculature and Its Local Circulation

Erythrocytic stage of *Plasmodium* parasite gives direct consequences to the host's infected red blood cells. These changes include loss of the normal discoid shape, loss of deformability

properties due to escalated rigidity of the membrane, increased cell wall permeability due to a wide array of ionic and other species, and expanded its adhesiveness, mostly to microvasculature endothelial surfaces. At that location, blood cells approximate the size of the microvasculature themselves; and sophisticated interactions among blood cells, plasma molecules, and the endothelium constantly ensue. The size of the microvasculature, speed of fluid intra-luminal, and unique rheological properties of blood all of these three play a role in influencing the shear stress and also increased the possibilities of adhesiveness pRBC [35]. One that must be remembered that abnormalities exclusively occur intra-luminal of microvasculature [36].

The sequence of events took part gradually but perhaps rapidly, starting with sequestration of parasitized erythrocytes [37], rosetting [38] and aggregation of parasitic particles in the kidney [39]. This aggregation causing series of events that lead to endothelial activation [36,40] and microvascular flow hindrance [36], and in the end impairment and even total impenetrable of renal blood flow causing local tissue hypoxia, especially in non-immune children [41,42]. Disturbance that initially occurs locally and may be only partial in the beginning but can then spread rapidly to encompass the entire anatomy of the kidney as the disease progresses to worse [22,27-29].

Particular ensigns of malaria infection is the condition of intravascular hemolysis, primarily of PRBCs, which followed by the liberation of cell-free heme systematically, as well as both damaged host and parasite-derived molecules that surely stimulate further inflammatory reactions [26]. Once released from cells and from hemeproteins, free heme generates series of oxidative damage and inflammation, thus enacting as a prototypic damage-associated molecular pattern [43].

To some extent, intravascular hemolysis actually occurs in all type of malaria (*falciparum*, *vivax*, *malariae* or *ovale*) but the most proclaimed causing considerable hemolysis happens only in *falciparum* malaria, as an outcome of the excessive densities of the malaria parasite in the blood (hyper-parasitemia); customarily occurring with this type of parasite species [44]. The distinct virulence of *P. falciparum* is also appertaining to the expression of malaria proteins on the superficial aspect of pRBC, a

condition which authorize their adhesion to the endothelium section of microvasculature, through attaching to the receptors of endothelial lining (e.g., ICAM-1, EPCR) [45].

As the red pulp of spleen is actually very effective in destroying rheologically impaired and less deformable erythrocytes, but unfortunately the developing malaria parasite has developed mechanisms that changes the host cell in certain ways to run away splenic clearance [46]. Sequestered pRBCs able to avoid splenic clearance by cytoadhering to the vascular endothelium and sequestering in capillary beds of organs that are less dangerous than the spleen, bestowing to elevated number of parasite count, block any microvasculature being entered through rosetting, bring about permanent tissue hypoxia, and actuate vascular endothelial cells, a condition that precedes glycocalyx degradation and microvascular dysfunction, permanently [36].

Endothelial activation is believable a focus of pathological reaction for the permanent loss of microvasculature function, causing in

disablement of its barrier affair that contributed to the dysregulation of blood movement intravasculature and triggers coagulation cascades with the emanation of proinflammatory cytokines, further magnifying the host inflammatory reaction [32,33,35,36].

Endothelial activation contributes significantly to the pathogenesis of severe malaria, specifically through upregulating cell adhesion molecules (CAMs) that mediate cytoadherence of pRBC in certain microvasculature, contributing to the happening of acute tissue hypoperfusion that triggers ischemia locally (which initially occurs only locally in certain areas of the affected kidney but can quickly expand massively) and cause metabolic acidosis, as well as permanent blood-brain barrier dysfunction [40,47].

More comprehensive clinical research is needed in order to build a detailed understanding of the clinical worsening of the disease, it can provide insight for medical personnel elsewhere in treating difficult cases like this.

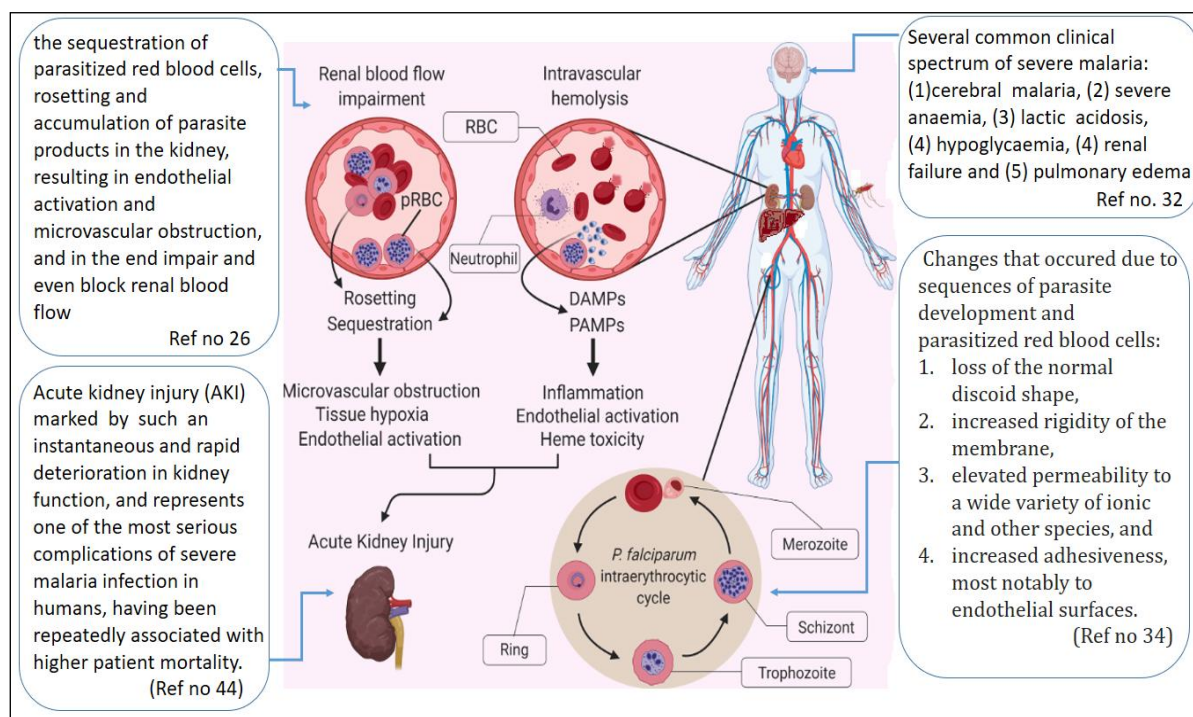


Fig. 1. According to Katsoulis et al., schematic response of the infected host to malaria-specific virulence factor and in turn, the awakening of the host's systemic inflammatory response with focus on its effect in the formation of malaria-related acute kidney injury (AKI). [26, with modification]

The interdependent occurrence of the unique hallmarks of pathology clearly characterized by several life-threatening symptoms, including pRBC sequestration, microvasculature deteriorated, endothelial activation, massive intravascular hemolysis and hemodynamic uncertainty, crowning in the exacerbation of an active systemic inflammatory reaction on the kidneys, might constitute the uppermost mechanism of developing AKI (Fig. 1).

2.3 Infection-triggered Proinflammatory Reactions within the Kidney

Understanding the contribution of the host's inflammatory reaction against malarial parasite, and the extent to which it significantly affect the disease progression/worsening, could help in several ways, e.g., (1) developing early identification tools to prevent specific disease progression, (2) by identifying specific chain of inflammatory response and the exact part of the host's affected the most, (3) to the production of new immunomodulatory therapies which crucially reduces malaria-related mortality.

In individuals living in malaria-endemic areas, initial parasitaemia baseline for the onset of clinical parasitaemia actually fluctuate with transmission intensity. Since theoretically, inflammatory responses to this hemo-protozoan infection contribute significantly to the clinical manifestation of malaria, it is important to evaluate the inflammatory cytokine responses in individuals suffer from active malaria, especially children, based on the areas with different transmission [48].

As one of the vulnerable groups, young children differs in their immune response compared with adults [49], and these differences likely contribute to the increased susceptibility of children to severe malaria [50,51] and to their postponement development of immunity against this blood protozoan parasite [52]. Elevated levels of pro-inflammatory cytokines and chemokines in the peripheral blood during acute infection [53,54] contribute to parasitaemia [55], but are also responsible for much of the immunopathology seen during clear and visible symptomatic malaria [56] and also in condition of asymptomatic malaria [57] and its differing and fluctuating, based on the intensity of malaria transmission [58]. Clinical immunity to malaria may revolve upon the ability to balance these pro- and anti-inflammatory responses [59], possibly through mechanisms of immunologic

tolerance and this provide an alternative strategy of acquired immunity to malaria [60].

The process of malaria related AKI in fevered African youngster are presumably multi-factorial in origin. According to the study conducted by Hawkes et al. [61] among Sub-Saharan African children who suffer from malaria, there was indication of more notabled endothelial activation with boosted in sVCAM-1, sICAM-1 and higher IL-8 levels.

Several condition that can be found in malaria related AKI are as follow:

1. Definite jaundice perhaps be an early clinical sign of hemolysis and clinicians must be observed this situation carefully for its progression, because this can be an early indication AKI in malaria. Hemolysis is common condition found in falciparum malaria, because as an obligate intra-erythrocyte parasite, this organism can have caused its infected host's cells to disrupt its function and even causing cell lysis. This results in the discharge of free heme- a precursor to hemoglobin, which has long been known as a potent nephrotoxic substance [62]. Beside intravascular hemolysis, jaundice can also occur due to the condition of disseminated intravascular coagulation, and, rarely, 'malarial hepatitis' [63].
2. Delayed capillary refill, an often neglected clinical sign of diminished tissue perfusion, which can quickly progress to shock (if not immediately detected and treated) [64]. This situation may strongly indicate pre-renal causes of AKI in malaria patients, especially children who are susceptible to massive perfusion changes to the peripheral tissues. According to Evans et al. [64], A prolonged (> 2 seconds) capillary refill time (pCRT) was identified as an independent prognostic indicator of death along with acidosis, coma and respiratory distress in patient with severe and complicated malaria.
3. Host biomarkers also supply clinicians with supplementary mechanistic intuitions. For example, Cystatin C is a well-known functional biomarker of AKI in pediatric populations. Overall, 19.4% of the participants had a positive cystatin C test in Hawkes et al. study [61]. Unfortunately, the relationship between severe AKI and mortality in severe malaria, independent of

the disease progression and severity, suggesting alternative pathways may be chipping in to escalated mortality in vulnerable children with severe malaria and AKI.

4. Endothelial activation seems to be a relatively frequent pathway leading to AKI in severe malaria. Increased endothelial activation in malaria-associated AKI may reflect straight offense to the glomerular endothelium due to specific properties of *P. falciparum* cytoadherence. However, as severe malaria is a multi-system disease, we cannot rule out endothelial activation in other organ systems contributing to enhanced systemic endothelial activation in the context of severe malaria-associated AKI.
5. Elevated circulating levels of cell surface molecules namely soluble intercellular adhesion molecule-1 (sICAM-1) [65], soluble vascular cell molecule-1 (sVCAM-1) [65], soluble fms-like tyrosine kinase 1 (sFlt-1) [61], and Angiopoietin-2 (Angpt-2) [66] levels. These results, eventhough as a non-specific marker of disease, are congruent with severity or progression that happens in critical illness [67, 68]. Angpt-2 levels have been implicated severe malaria. A polymorphism (rs2920656C > T) located close by the ANGPT2 gene linked with a functional reduction in Angpt-2 formation is correlated with lessened risk of the possibility of evolving a sub-phenotype of AKI elucidated centered on the level of sTNFR1, Angpt-2, and Angpt-1. Changes in sTNFR1, Angpt-1, and also Angpt-2 level were whole apparent in severe malaria-associated AKI. Prospective researches are needed in order to examine the potency of polymorphisms in the ANGPT2 gene that perhaps modified the chance of AKI severity and also healing in relation to severe malaria.
6. Severe AKI was also characterized by immune activation with specific elevations in sTNFR1, sTREM-1, CHI3L1, and IL-8 [61]. In malaria, a higher immune activation index (IAI) was associated with several diseases, including severe AKI [69-71]. These findings are consistent with at least three condition: (1) markers of immune activation as biomarkers of AKI and also disease severity, (2) to risk-stratify patients at risk of mortality in outpatient settings, and (3) for prognostic enrichment of

patients with sepsis [41]. additional data also supports CHI3L1 and sTREM-1 as biomarkers of AKI, disease severity and progression, and even mortality in severe malaria. Additional longitudinal researches are entailed urgently in order to examine the practicality of these biomarkers in context of AKI duration, severity, and even perhaps kidney healing. particularly when this condition took place in a remote resource limited settings. detection of such biomarkers is still expensive and limited in the context of research and still cannot be applied clinically [68]; This is an obstacle as well as a challenge for researchers and clinicians to make it happen. In terms of the development of specific and unique biomarkers which is considered a pathgnomonic marker for severe malaria, e.g., their identification, validation and even optimalization, are still in the early period. Some candidate biomarkers appear to be promising for making prognosis, but further studies are still needed to establish their prognostic importance.

3. CONCLUSION

Kidney malfunction is still one of the leading fatal complication in severe malaria. Management of malaria-associated kidney disease comprises appropriate antimalarial regiment, besides all supportive procedures that AKI requires (hydroelectrolytic disorder amendment, fluid balanced management and if necessary performing dialysis. Technologically, the coming of new technologies would also be helpful in strengthening the molecular process regarding identification, validation and optimalization of clinical biomarkers, but from the point of economy value and interest, affordable alternative assay systems urgently need to be developed for translation in the clinical context of malaria.

CONSENT

It is not applicable.

ETHICAL APPROVAL

It is not applicable.

COMPETING INTERESTS

Author has declared that no competing interests exist.

REFERENCES

1. Lesmana SD, Maryanti E, Haslinda L, Putra W, Fadhillah MN, Anwar FR, et al. Identification of anopheles mosquito species as malaria vector in Riau, Indonesia. *Jurnal Ilmu Kedokteran (Journal of Medical Science)*. 2021;14(1):21-9.
2. Akpan GE, Adepoju KA, Oladosu OR. Potential distribution of dominant malaria vector species in tropical region under climate change scenarios. *PLoS One*. 2019 Jun 19;14(6):e0218523. Available:https://doi.org/10.1371/journal.pone.0218523
3. Kalil FS, Bedaso MH, Wario SK. Trends of malaria morbidity and mortality from 2010 to 2017 in Bale Zone, Ethiopia: Analysis of surveillance data. *Infect Drug Resist*. 2020 Dec 8;13:4379-4387. Available:https://doi.org/10.2147/IDR.S284281
4. Siagian FE. Malaria epidemiology: Specific vulnerable group in the population. *International Journal of Research and Reports in Hematology*. 2020;3(2):41-52. Available:https://journalijr2h.com/index.php/IJR2H/article/view/30124
5. Conn JE, Grillet ME, Correa M, Sallum MM. Malaria transmission in South America—Present status and prospects for elimination. In: Manguin S, Dev V, editors. *Towards Malaria Elimination - A Leap Forward* [Internet]. London: IntechOpen; 2018. Available:https://www.intechopen.com/chapters/62219 https://doi.org/10.5772/intechopen.76964
6. Domínguez García M, Feja Solana C, Vergara Ugarriza A. Imported malaria cases: The connection with the European ex-colonies. *Malar J*. 2019;18:397. Available:https://doi.org/10.1186/s12936-019-3042-1
7. Lee WC, Russell B, Rénia L. Sticking for a cause: The falciparum malaria parasites cytoadherence paradigm. *Front Immunol*. 2019;10:1444. Available:https://doi.org/10.3389/fimmu.2019.01444.
8. Trampuz A, Jereb M, Muzlovic I, Prabhu RM. Clinical review: Severe malaria. *Crit Care*. 2003;7(4):315-23. Available:https://doi.org/10.1186/cc2183
9. Plewes K, Turner GDH, Dondorp AM. Pathophysiology, clinical presentation, and treatment of coma and acute kidney injury complicating falciparum malaria. *Curr Opin Infect Dis*. 2018;31(1):69-77. Available:https://doi.org/10.1097/QCO.0000000000000419
10. Hanson J, Lee SJ, Hossain MA. Microvascular obstruction and endothelial activation are independently associated with the clinical manifestations of severe falciparum malaria in adults: An observational study. *BMC Med*. 2015;13:122. Available:https://doi.org/10.1186/s12916-015-0365-9
11. Brown DD, Solomon S, Lerner D, Del Rio M. Malaria and acute kidney injury. *Pediatr Nephrol*. 2020;35(4):603-8. Available:https://doi.org/10.1007/s00467-018-4191-0.
12. Landier J, Parker DM, Thu AM. The role of early detection and treatment in malaria elimination. *Malar J*. 2016;15:363. Available:https://doi.org/10.1186/s12936-016-1399-y
13. Graumans W, Jacobs E, Bousema T, Sinnis P. When is a plasmodium-infected mosquito an infectious mosquito? *Trends Parasitol*. 2020;36(8):705-16. Available:https://doi.org/10.1016/j.pt.2020.05.011.
14. Anonymous. Malaria susceptibility—It's not all in the genes. *PLoS Med*, 2005;2(12): e411. Available:https://doi.org/10.1371/journal.pmed.0020411
15. Mavondo G A, Mzingwane ML. Severe Malarial Anemia (SMA) pathophysiology and the use of phytotherapeutics as treatment options. In: Khan J (ed). *Current Topics in Anemia* [Internet]. London: IntechOpen; 2017. Available:https://doi.org/10.5772/intechopen.70411
16. Mathews SE, Bhagwati MM, Agnihotri V. Clinical spectrum of *Plasmodium vivax* infection, from benign to severe malaria: A tertiary care prospective study in adults from Delhi, India. *Trop Parasitol*. 2019;9: 88-92. Available:https://doi.org/10.4103/tp.TP_2_19
17. Bria YP, Yeh CH, Bedingfield S. Significant symptoms and nonsymptom-related factors for malaria diagnosis in endemic regions of Indonesia. *Int J Infect Dis*. 2021; 103:194-200. Available:https://doi.org/10.1016/j.ijid.2020.11.177

18. da Silva Junior GB, Pinto JR, Barros EJJ, Farias GMN, Daher EDF. Kidney involvement in malaria: An update. *Revista do Instituto de Medicina Tropical de São Paulo* [online]. 2017;59:e53. Available: <https://doi.org/10.1590/S1678-9946201759053>
19. Tangpukdee N, Duangdee C, Wilairatana P, Krudsood S. Malaria diagnosis: A brief review. *Korean J Parasitol*. 2009;47(2):93-102. Available: <https://doi.org/10.3347/kjp.2009.47.2.93>
20. Brejt JA, Golightly LM. Severe malaria: Update on pathophysiology and treatment. *Current Opinion in Infectious Diseases*. 2019;32(5):413-8. Available: <https://doi.org/10.1097/QCO.000000000000584>
21. Rahimi BA, Thakkestian A, White NJ. Severe vivax malaria: A systematic review and meta-analysis of clinical studies since 1900. *Malar J*. 2014;13:481. Available: <https://doi.org/10.1186/1475-2875-13-481>
22. Bartoloni A, Zammarchi L. Clinical aspects of uncomplicated and severe malaria. *Mediterr J Hematol Infect Dis*. 2012;4(1):e2012026. Available: <https://doi.org/10.4084/MJHID.2012.026>
23. Voorberg-van der Wel A, Kocken CHM, Zeeman AM. Modeling relapsing malaria: Emerging technologies to study parasite-host interactions in the liver. *Front Cell Infect Microbiol*. 2021;10:606033. Available: <https://doi.org/10.3389/fcimb.2020.606033>
24. Imwong M, Snounou G, Pukrittayakamee S, Tanomsing N, Jung RK, Nandy A, et al. Relapses of *Plasmodium vivax* infection usually result from activation of heterologous hypnozoites. *The Journal of Infectious Diseases*. 2007;195(7):927–33. Available: <https://doi.org/10.1086/512241>
25. Badiane AS, Diongue K, Diallo S. Acute kidney injury associated with *Plasmodium malariae* infection. *Malar J*. 2014;13:226. Available: <https://doi.org/10.1186/1475-2875-13-226>
26. Katsoulis O, Georgiadou A, Cunningham AJ. Immunopathology of acute kidney injury in severe malaria. *Front Immunol*. 2021;12:651739. Available: <https://doi.org/10.3389/fimmu.2021.651739>
27. Sitprija V. Nephropathy in falciparum malaria. *Kidney International*. 1988;34(6). Available: <https://doi.org/10.1038/ki.1988.262>
28. Berger M, Birch LM, Conte NF. The nephrotic syndrome secondary to acute glomerulonephritis during falciparum malaria. *Ann Intern Med*. 1967;67:1163-1171. Available: <https://doi.org/10.7326/0003-4819-67-6-1163>
29. Lee MSJ, Coban C. Unforeseen pathologies caused by malaria. *International Immunology*. 2018;30(3):121–9. Available: <https://doi.org/10.1093/intimm/dx076>
30. Delves M, Plouffe D, Scheurer C, Meister S, Wittlin S, Winzeler EA, et al. The activities of current antimalarial drugs on the life cycle stages of Plasmodium: A comparative study with human and rodent parasites. *PLoS Med*. 2012;9(2):e1001169. Available: <https://doi.org/10.1371/journal.pmed.1001169>
31. White NJ. Malaria parasite clearance. *Malar J*. 2017;16(1):88. Available: <https://doi.org/10.1186/s12936-017-1731-1>. Erratum in: *Malar J*. 2017;16(1):194.
32. Nguansangiam S, Day NPJ, Hien TT, Mai NTH, Chaisri U, Riganti M, Dondorp AM, et al. A quantitative ultrastructural study of renal pathology in fatal Plasmodium falciparum malaria. *Tropical Medicine & International Health*. 2007;12:1037-50. Available: <https://doi.org/10.1111/j.1365-3156.2007.01881.x>
33. Wichapoon B, Punsawad C, Chaisri U. Glomerular changes and alterations of zonula occludens-1 in the kidneys of Plasmodium falciparum malaria patients. *Malar J*. 2014;13:176. Available: <https://doi.org/10.1186/1475-2875-13-176>
34. Mohandas N, An X. Malaria and human red blood cells. *Med Microbiol Immunol*. 2012;201(4):593-8. Available: <https://doi.org/10.1007/s00430-012-0272-z>
35. Myers DR, Lam WA. Vascularized microfluidics and their untapped potential for discovery in diseases of the microvasculature. *Annu Rev Biomed Eng*. 2021;23:407-32. Available: <https://doi.org/10.1146/annurev-bioeng-091520-025358>

36. Woodford J, Yeo TW, Piera KA, Butler K, Weinberg JB, McCarthy JS, et al. Early endothelial activation precedes glycocalyx degradation and microvascular dysfunction in experimentally induced *Plasmodium falciparum* and *Plasmodium vivax* infection. *Infect Immun.* 2020;88(5): e00895-19.
Available: <https://doi.org/10.1128/IAI.00895-19>.
37. Franke-Fayard B, Fonager J, Braks A, Khan SM, Janse CJ. Sequestration and tissue accumulation of human malaria parasites: Can we learn anything from rodent models of malaria? *PLoS Pathog.* 2010; 6(9):e1001032.
Available: <https://doi.org/10.1371/journal.ppat.1001032>
38. McQuaid F, Rowe J. Rosetting revisited: A critical look at the evidence for host erythrocyte receptors in *Plasmodium falciparum* rosetting. *Parasitology.* 2020; 147(1):1-11.
Available: <https://doi.org/10.1017/S0031182019001288>
39. Ramos S, Carlos AR, Sundaram B, Jeney V, Ribeiro A, Gozzelino R, et al. Renal control of disease tolerance to malaria. *Proc Natl Acad Sci U S A.* 2019;116(12): 5681-5686.
Available: <https://doi.org/10.1073/pnas.1822024116>
40. Turner GD, Ly VC, Nguyen TH, Tran TH, Nguyen HP, Bethell D, et al. Systemic endothelial activation occurs in both mild and severe malaria. Correlating dermal microvascular endothelial cell phenotype and soluble cell adhesion molecules with disease severity. *Am J Pathol.* 1998; 152(6):1477-87.
41. Autino B, Corbett Y, Castelli F, Taramelli D. Pathogenesis of malaria in tissues and blood. *Mediterr J Hematol Infect Dis.* 2012;4(1):e2012061.
Available: <https://doi.org/10.4084/MJHID.2012.061>
42. Schwartz E, Sadetzki S, Murad H, Raveh D. Age as a risk factor for severe *Plasmodium falciparum* malaria in nonimmune patients. *Clinical Infectious Diseases.* 2001;33(10):1774–7.
Available: <https://doi.org/10.1086/322522>
43. Dutra FF, Bozza MT. Heme on innate immunity and inflammation. *Front Pharmacol.* 2014;5:115.
Available: <https://doi.org/10.3389/fphar.2014.00115>
44. Kotepui M, Piwkham D, PhunPhuech B, Phiwkham N, Chupeerach C, Duangmano S. Effects of malaria parasite density on blood cell parameters. *PLoS One.* 2015 Mar 25;10(3):e0121057.
Available: <https://doi.org/10.1371/journal.pone.0121057>
45. Avril M, Bernabeu M, Benjamin M, Brazier AJ, Smith JD. Interaction between Endothelial Protein C receptor and intercellular adhesion molecule 1 to mediate binding of *Plasmodium falciparum*-Infected erythrocytes to endothelial cells. *mBio.* 2016;7(4):e00615-16.
Available: <https://doi.org/10.1128/mBio.00615-16>
46. Lee WC, Russell B, Rénia L. Sticking for a cause: The falciparum malaria parasites cytoadherence paradigm. *Front Immunol.* 2019;10:1444.
DOI: 10.3389/fimmu.2019.01444
47. Ouma BJ, Ssenkusu JM, Shabani E, Datta D, Opoka RO, Idro R, Bangirana P, Park G, Joloba ML, Kain KC, John CC, Conroy AL. Endothelial activation, acute kidney injury, and cognitive impairment in pediatric severe malaria. *Crit Care Med.* 2020;48(9):e734-e743.
Available: <https://doi.org/10.1097/CCM.0000000000004469>
48. Ademolue TW, Aniweh Y, Kusi KA, Awandare GA. Patterns of inflammatory responses and parasite tolerance vary with malaria transmission intensity. *Malar J.* 2017;16(1):145.
Available: <https://doi.org/10.1186/s12936-017-1796-x>
49. Oyong DA, Loughland JR, Soon MSF, Chan JA, Andrew D, Wines BD, et al. Adults with *Plasmodium falciparum* malaria have higher magnitude and quality of circulating T-follicular helper cells compared to children. *EBioMedicine.* 2022; 75:103784.
Available: <https://doi.org/10.1016/j.ebiom.2021.103784>
50. Hawkes M, Elphinstone RE, Conroy AL, Kain KC. Contrasting pediatric and adult cerebral malaria: The role of the endothelial barrier. *Virulence.* 2013;4(6): 543-55.
Available: <https://doi.org/10.4161/viru.25949>
51. Randall LM, Kenangalem E, Lampah DA, Tjitra E, Mwaikambo ED, Handojo T, et al. Age-related susceptibility to severe malaria

- associated with galectin-2 in highland Papuans. *J Infect Dis.* 2010;202(1):117-24.
Available:<https://doi.org/10.1086/653125>
52. Yap XZ, Hustin LSP, Sauerwein RW. TH1-Polarized TFH cells delay naturally-acquired immunity to malaria. *Front Immunol.* 2019;10:1096.
Available:<https://doi.org/10.3389/fimmu.2019.01096>
 53. Rodrigues-da-Silva, Rodrigo Nunes. Alterations in cytokines and haematological parameters during the acute and convalescent phases of *Plasmodium falciparum* and *Plasmodium vivax* infections. *Memórias do Instituto Oswaldo Cruz* [online]. 2014;109(2):154-62.
Available:<https://doi.org/10.1590/0074-0276140275>
 54. Hojo-Souza NS, Pereira DB, de Souza FS, de Oliveira Mendes TA, Cardoso MS, Tada MS, Zanini GM, Bartholomeu DC, Fujiwara RT, Bueno LL. On the cytokine/chemokine network during *Plasmodium vivax* malaria: New insights to understand the disease. *Malar J.* 2017;16(1):42.
Available:<https://doi.org/10.1186/s12936-017-1683-5>
 55. Jason J, Archibald LK, Nwanyanwu OC, Bell M, Buchanan I, Larned J, Kazembe PN, Dobbie H, Parekh B, Byrd MG, Eick A, Han A, Jarvis WR. Cytokines and malaria parasitemia. *Clin Immunol.* 2001;100(2):208-18.
Available:<https://doi.org/10.1006/clim.2001.5057>
 56. Mavondo GA, Mkhwanazi BN, Mzingwane ML, Dangarembizi R, Zambuko B, Moyo O, et al. Malarial inflammation-driven pathophysiology and its attenuation by triterpene phytotherapeutics. In: Pacheco, G. A. B., Kamboh, A. A., editors. *Parasitology and Microbiology Research* [Internet]. London: IntechOpen; 2019.
Available:<https://doi.org/10.5772/intechopen.88731>
 57. Frimpong A, Amponsah J, Adjokatseh AS, Agyemang D, Bentum-Ennin L, Ofori EA, et al. Asymptomatic malaria infection is maintained by a balanced pro- and anti-inflammatory response. *Front Microbiol.* 2020;11:559255.
Available:<https://doi.org/10.3389/fmicb.2020.559255>.
Erratum in: *Front Microbiol.* 2021;12:686435.
 58. Aguilar R, Campo JJ, Chicuecue S. Changing plasma cytokine, chemokine and growth factor profiles upon differing malaria transmission intensities. *Malar J.* 2019;18:406.
Available:<https://doi.org/10.1186/s12936-019-3038-x>
 59. Keegan LT, Dushoff J. Population-level effects of clinical immunity to malaria. *BMC Infect Dis.* 2013;13:428.
Available:<https://doi.org/10.1186/1471-2334-13-428>
 60. Nahrendorf W, Ivens A, Spence PJ. Inducible mechanisms of disease tolerance provide an alternative strategy of acquired immunity to malaria. *Elife.* 2021 Mar 23;10:e63838.
Available:<https://doi.org/10.7554/eLife.63838>
 61. Hawkes MT, Leligdowicz A, Batte A, Situma G, Zhong K, Namasopo S, Opoka RO, et al. Pathophysiology of acute kidney injury in malaria and non-malarial febrile illness: A prospective cohort study. *Pathogens.* 2022;11(4):436.
Available:<https://doi.org/10.3390/pathogens11040436>
 62. Lever JM, Boddu R, George JF, Agarwal A. Heme Oxygenase-1 in kidney health and disease. *Antioxid Redox Signal.* 2016; 25(3):165-83.
Available:<https://doi.org/10.1089/ars.2016.6659>
 63. Anand AC, Puri P. Jaundice in malaria. *J Gastroenterol Hepatol.* 2005;20(9):1322-32.
Available:<https://doi.org/10.1111/j.1440-1746.2005.03884.x>
 64. Evans JA, May J, Ansong D, Antwi S, Asafo-Adjei E, Nguah SB, et al. Capillary refill time as an independent prognostic indicator in severe and complicated malaria. *J Pediatr.* 2006 Nov;149(5):676-81.
Available:<https://doi.org/10.1016/j.jpeds.2006.07.040>
 65. Graham SM, Chen J, Chung DW. Endothelial activation, haemostasis and thrombosis biomarkers in Ugandan children with severe malaria participating in a clinical trial. *Malar J.* 2016;15:56.
Available:<https://doi.org/10.1186/s12936-016-1106-z>
 66. Kawai S, Matsumoto J, Aikawa M, Matsuda H. Increased plasma levels of

- soluble intercellular adhesion molecule-1 (sICAM-1) and soluble vascular cell molecule-1 (sVCAM-1) associated with disease severity in a primate model for severe human malaria: Plasmodium coatneyi-Infected Japanese macaques (*Macaca fuscata*). J Vet Med Sci. 2003; 65(5):629-31.
Available:https://doi.org/10.1292/jvms.65.
67. Oluboyo AO, Chukwu SI, Oluboyo BO, Odewusi OO. Evaluation of Angiopoietins 1 and 2 in Malaria-Infested Children. J Environ Public Health. 2020;2020: 2169763.
Available:https://doi.org/10.1155/2020/2169763
68. Andrade BB, Barral-Netto M. Biomarkers for susceptibility to infection and disease severity in human malaria. Mem Inst Oswaldo Cruz. 2011;106 Suppl 1:70-8.
Available:https://doi.org/10.1590/s0074-02762011000900009
69. Gucun M, Akyuz O, Bayram E, Ozgun Cakmak E. Systemic immune-inflammation index is a novel marker to predict contrast-induced acute kidney injury. EJMI. 2021;5(4):435-440.
Available:https://doi.org/10.14744/ejmi.2021.89773
70. Dzedzic EA, Gaşior JS, Tuzimek A, Paleczny J, Junka A, Dąbrowski M, et al. Investigation of the associations of novel inflammatory biomarkers—Systemic Inflammatory Index (SII) and Systemic Inflammatory Response Index (SIRI)—With the severity of coronary artery disease and acute coronary syndrome occurrence. International Journal of Molecular Sciences. 2022;23(17):9553.
Available:https://doi.org/10.3390/ijms23179553
71. Han K, Shi D, Yang L, Wang Z, Li Y, Gao F, et al. Prognostic value of systemic inflammatory response index in patients with acute coronary syndrome undergoing percutaneous coronary intervention. Annals of Medicine. 2022;54(1):1667-1677.
Available:https://doi.org/10.1080/07853890.2022.2083671

© 2022 Siagian; This is an Open Access article distributed under the terms of the Creative Commons Attribution License (<http://creativecommons.org/licenses/by/4.0>), which permits unrestricted use, distribution, and reproduction in any medium, provided the original work is properly cited.

Peer-review history:

The peer review history for this paper can be accessed here:
<https://www.sdiarticle5.com/review-history/93126>